

CITY ENGINEER'S OFFICE
STREET LINE DEPT.
Sept 11, 1854
0394

HIGH ST.

ST.

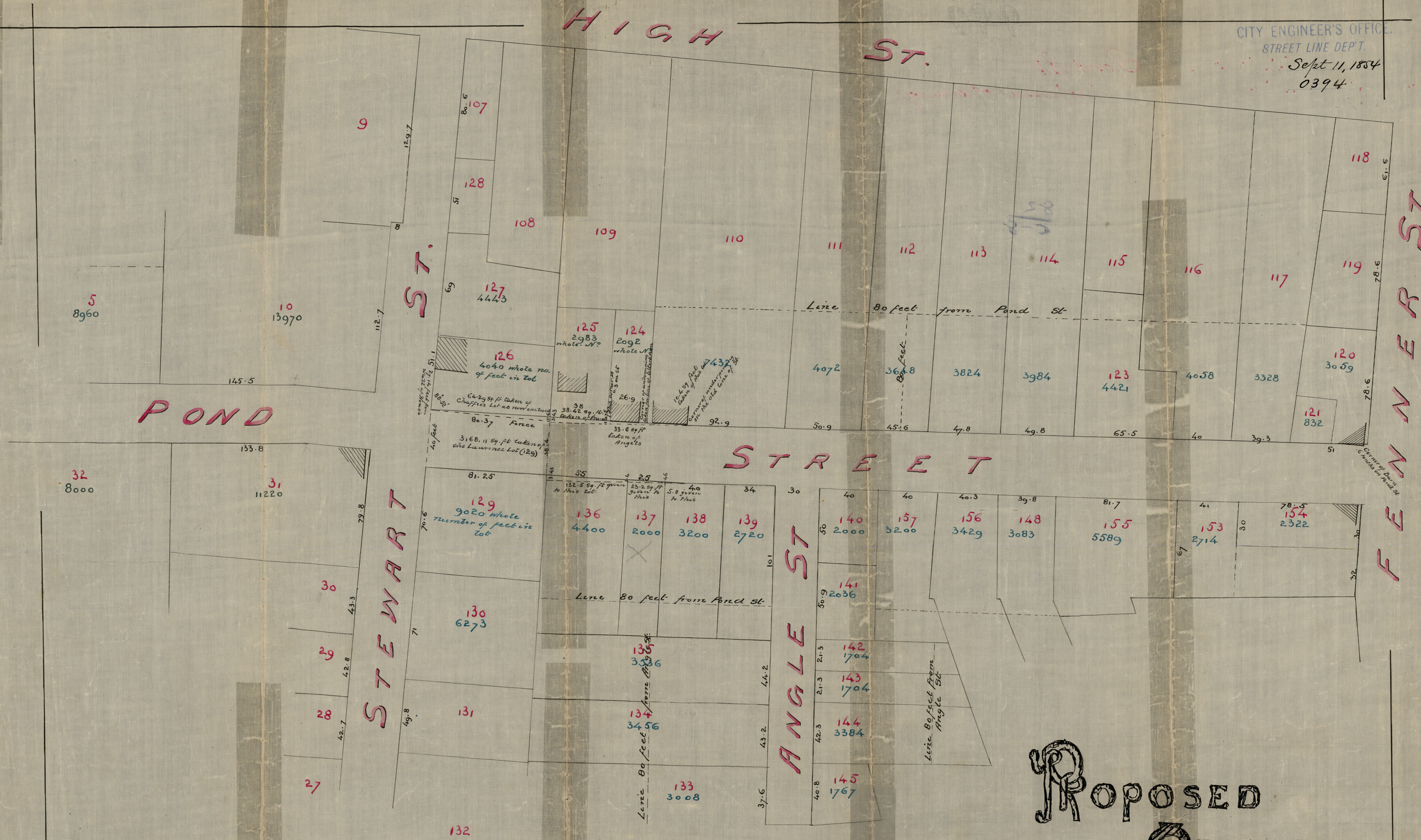
POND

STREET

STEWART

ANGLE ST

FENNER ST.



Proposed
Opening

POND ST

Scale 40 feet to an Inch W. D. M. by J. Howe.

MADE BY ORDER OF THE COMRS
September 11, 1854

FROM ORIGINAL SURVEY
and Wallings City Map

OFFICE No.	383
DRAWER	82
SHEET	C-8

Comparison from 1843 to 1854