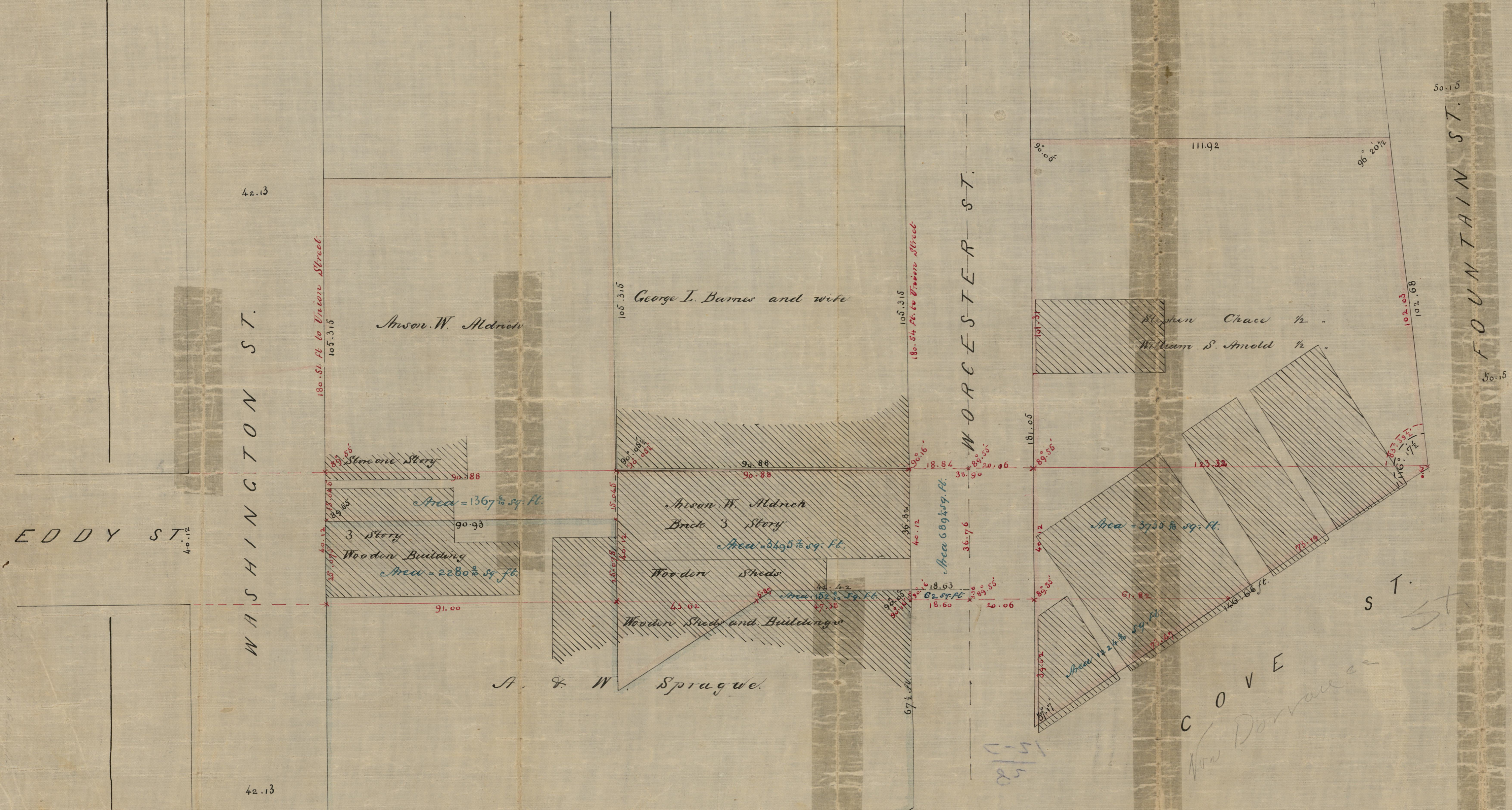


Plan  
OF THE PROPOSED EXTENSION OF  
**EDDY STREET**  
By L. E. PAINE CITY ENGINEER  
FEBY. 1870.

Scale  
20 feet to an Inch



EDDY ST.

WASHINGTON ST.

WORCESTER ST.

FOUNTAIN ST.

COVE  
New Dorrance St.

CITY ENGINEERS OFFICE  
STREET LINE DEPT.  
Feb. 1870  
0918

Compared with 14th 1872 H. J. R.

1003  
B-35