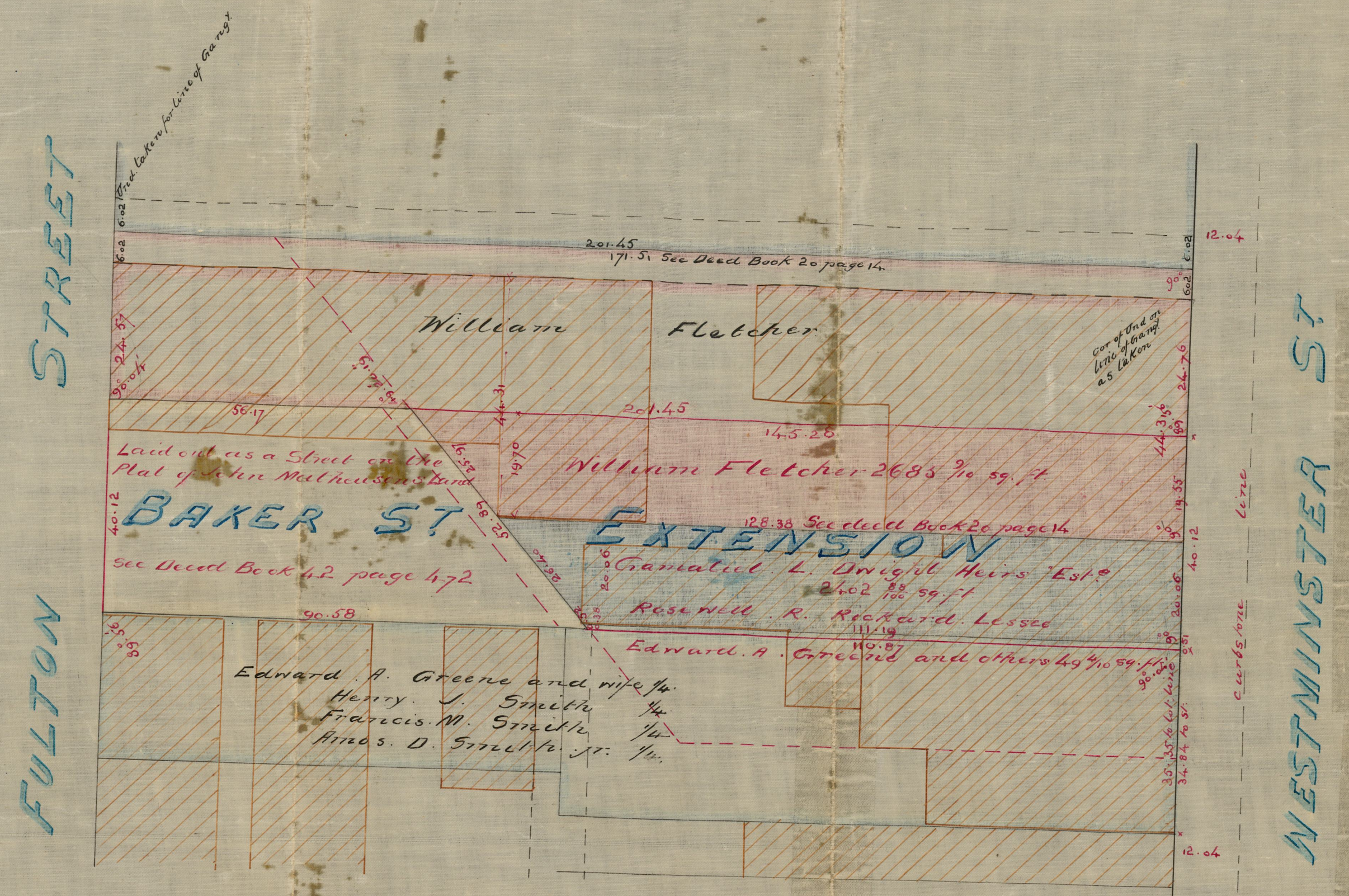


CITY ENGINEER'S OFFICE
 STREET LINE DEPT.
 July 1867
 0683

BAKER STREET EXTENSION

SCALE **SOUTHERLY TO**
WESTMINSTER ST.
 20 FEET TO AN INCH

Surveyed and drawn July 1867 by order of
 George J. Spruel, George P. Carpenter, A. S. Dike, Albert S. Sprague and
 Edwin Motehall, Commissioners appointed by the Hon Supreme Court.
 March Term 1867. By G. E. Paine



FULTON STREET

WESTMINSTER ST.

Completed July 27 1867. G. E. Paine

OFFICE No.	660
DRAWER	82
SHEET	C-12