

# NORTH MAIN STREET WIDENING

## FROM SMITH ST. TO MARKET SQUARE

SCALE  
40 FEET TO THE INCH

Drawn and Plotted April, 6, 1869 by order of James B. Hadden  
Deputy W. Ham Christopher J. Keith, Deary A. Holt and William  
W. Douglas, Commissioners appointed by the Hon. Supreme  
Court Oct. Jan. A. D. 1868 by  
C. C. Paine

PROVIDENCE, R. I.  
CITY ENGINEER'S OFFICE  
STREET LIME DEPT.  
Feb. 13, 1908  
63532

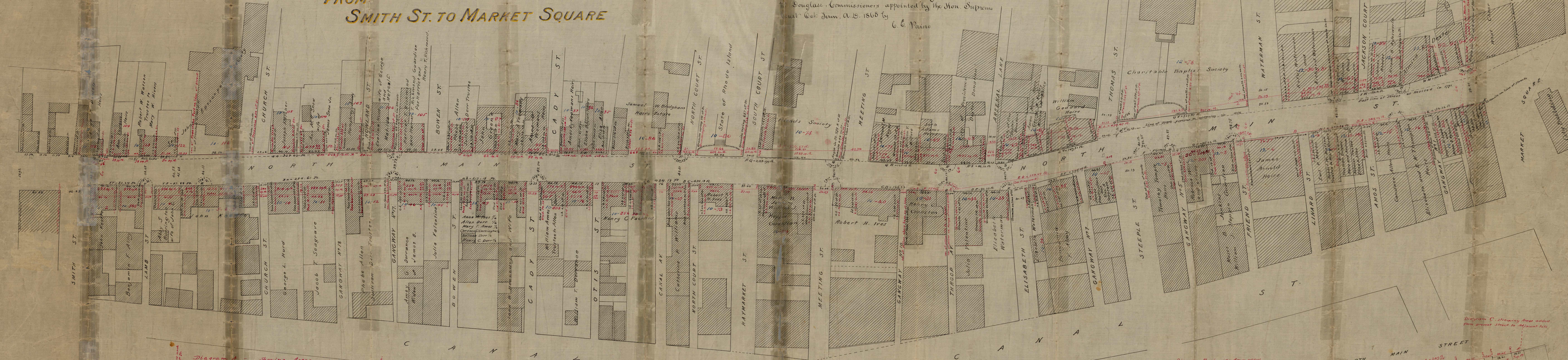


Diagram A - Showing Areas added from Present Street to Adjacent Lots

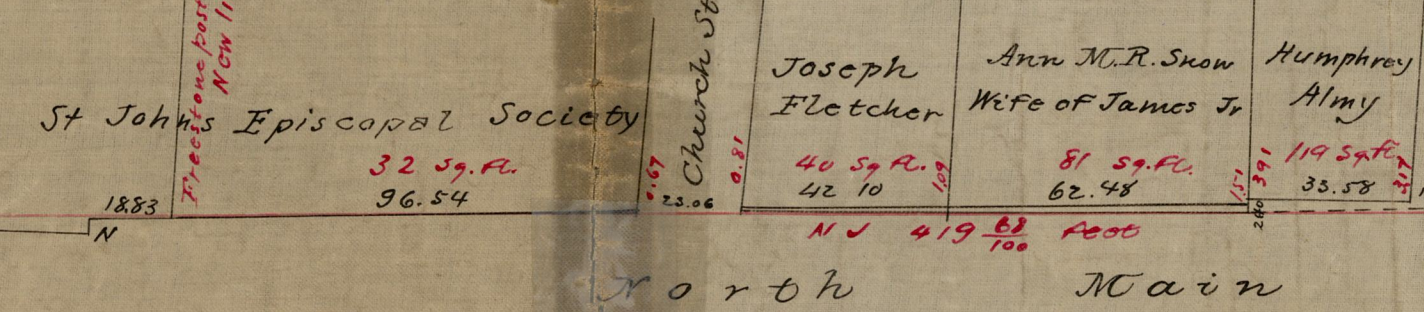


Diagram B - Showing Areas added from Present Street to Adjacent Lots

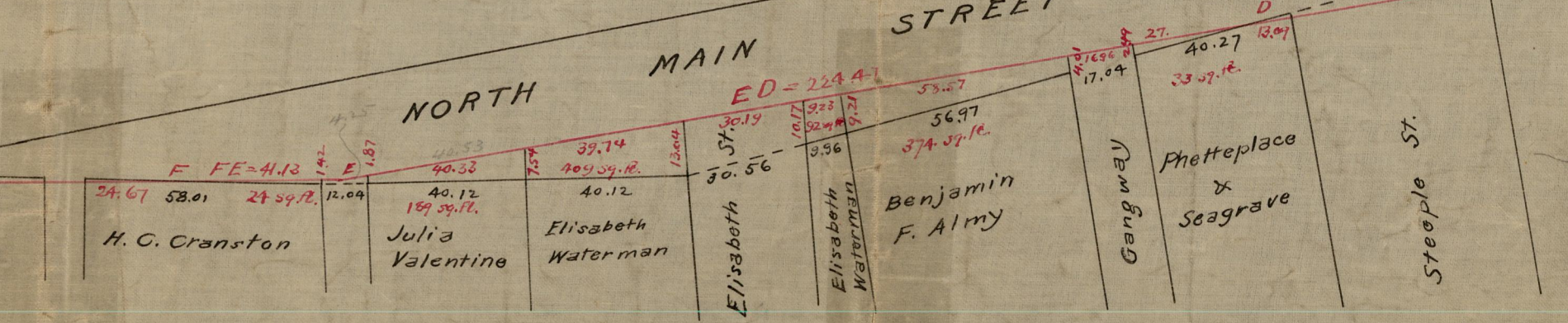
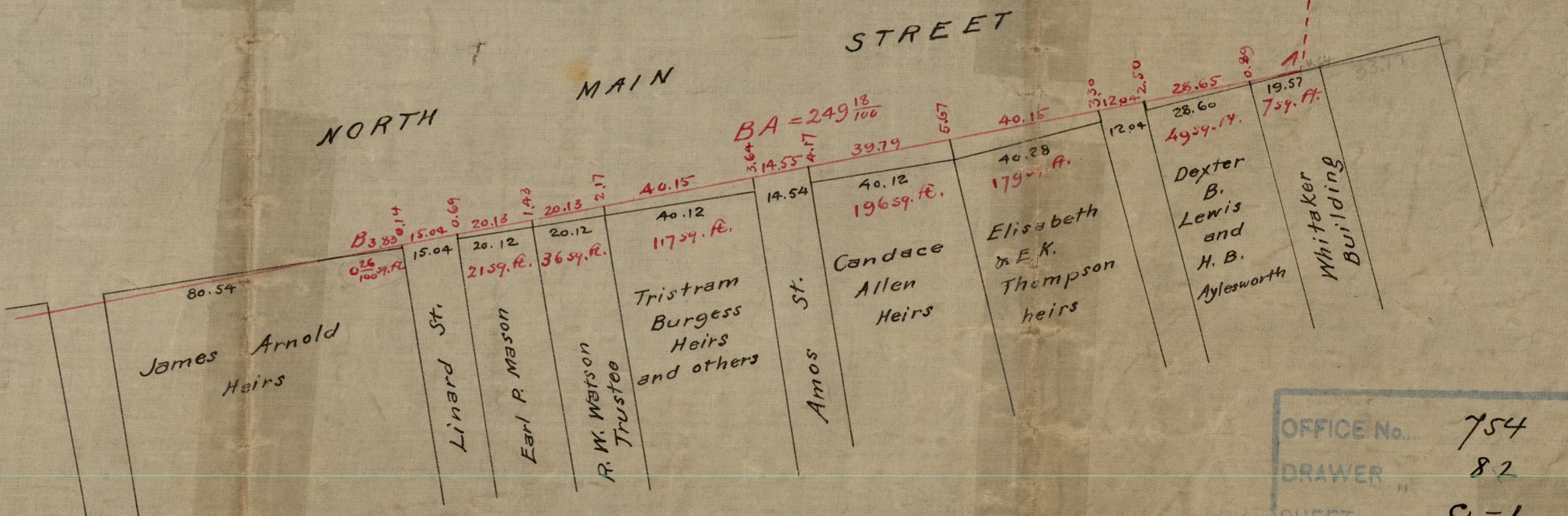


Diagram C - Showing Areas added from Present Street to Adjacent Lots



OFFICE No. 754  
DRAWER 82  
SHEET C-1