

City Engineer's Office Oct.  
Scale 60 feet to an inch.

# MAP OF SMITH ST.

FROM CHALKSTONE AV. TO RUGGLES ST.

COMPARED.

*W. H. Bladwing*  
Asst Engineer

CITY ENGINEER'S OFFICE.  
STREET LINE DEPT.

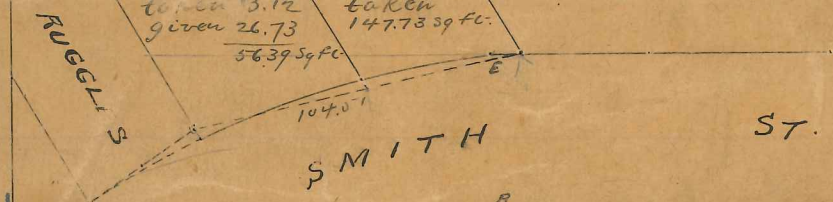
Oct. 1877

C 4111

Sketch  
showing former line of Smith St.  
near Ruggles St. (see broken line)

taken 3.12  
given 26.73  
56.39 Sq. ft.

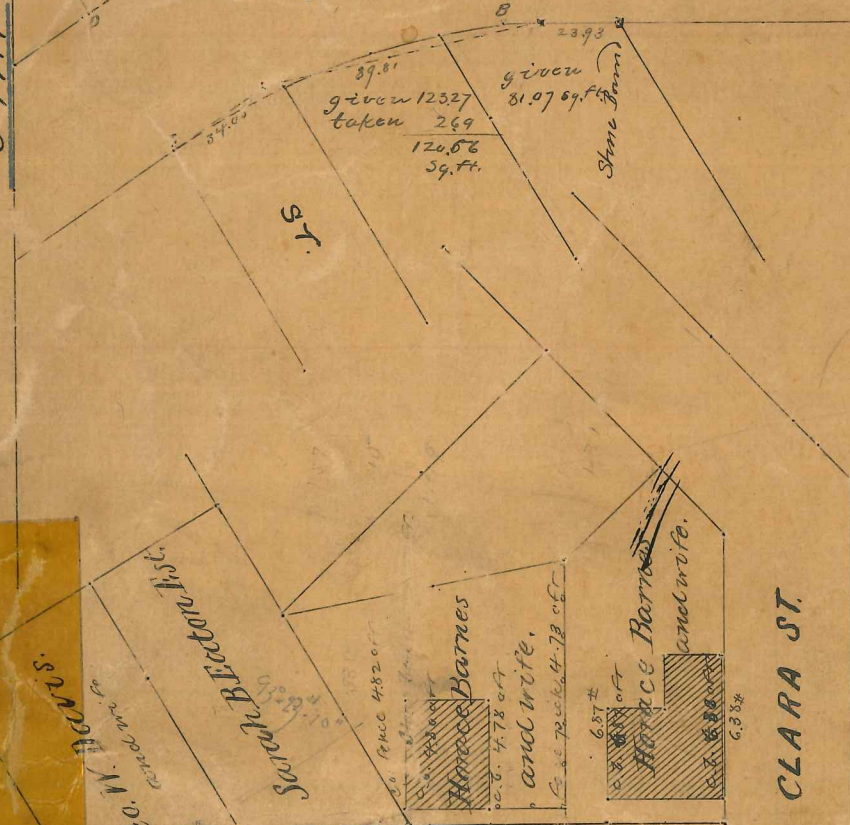
taken  
147.73 Sq. ft.



RUGGLES ST.  
SMITH ST.

given 12327  
taken 269  
120.66  
Sq. ft.

given 81.97  
taken 269  
120.66  
Sq. ft.



Geo. W. Rogers

Sarah B. Beckwith

Hannah Barnes  
and wife.

Hannah Barnes  
and wife.

CLARA ST.

Jesse B. Smeeth Est.

Jesse B. Smeeth Est.

Smith S. Smeeth.

Smith S. Smeeth.

Daniel Hall Est.

DANFORTH ST.

Walter S. Hagg.

William B. Stacy.

Leander M. Ware

John McGinnis

Stanley A. Jeff.

Stanley A. Jeff.

HARDENBERGH ST.  
Carmelora

EF = 693.43  
SMITH ST.

BA = 642.16

D.  
Phoebe A. Young.

Deliverance R. Atwood  
heirs.

RUGGLES ST.

James H. Saunders

John H. Saunders

Sarah M. Moore

Joseph M. Young

Joseph M. Young

GANGWAY

W. Steere

Elizabeth Steere  
wife of Job S.

82  
B-21

CHALKSTONE

BATH