

W. B.

CITY ENGINEER'S OFFICE.
STREET LINE DEPT.

July 23, 1881.

06927

Providence R.I.
This map accompanies
our report of this date.

MAP OF

TOCKWOTTON ST.

FROM TRAVERSE ST. TO LAND BELONGING TO ELLEN WRIGHT.

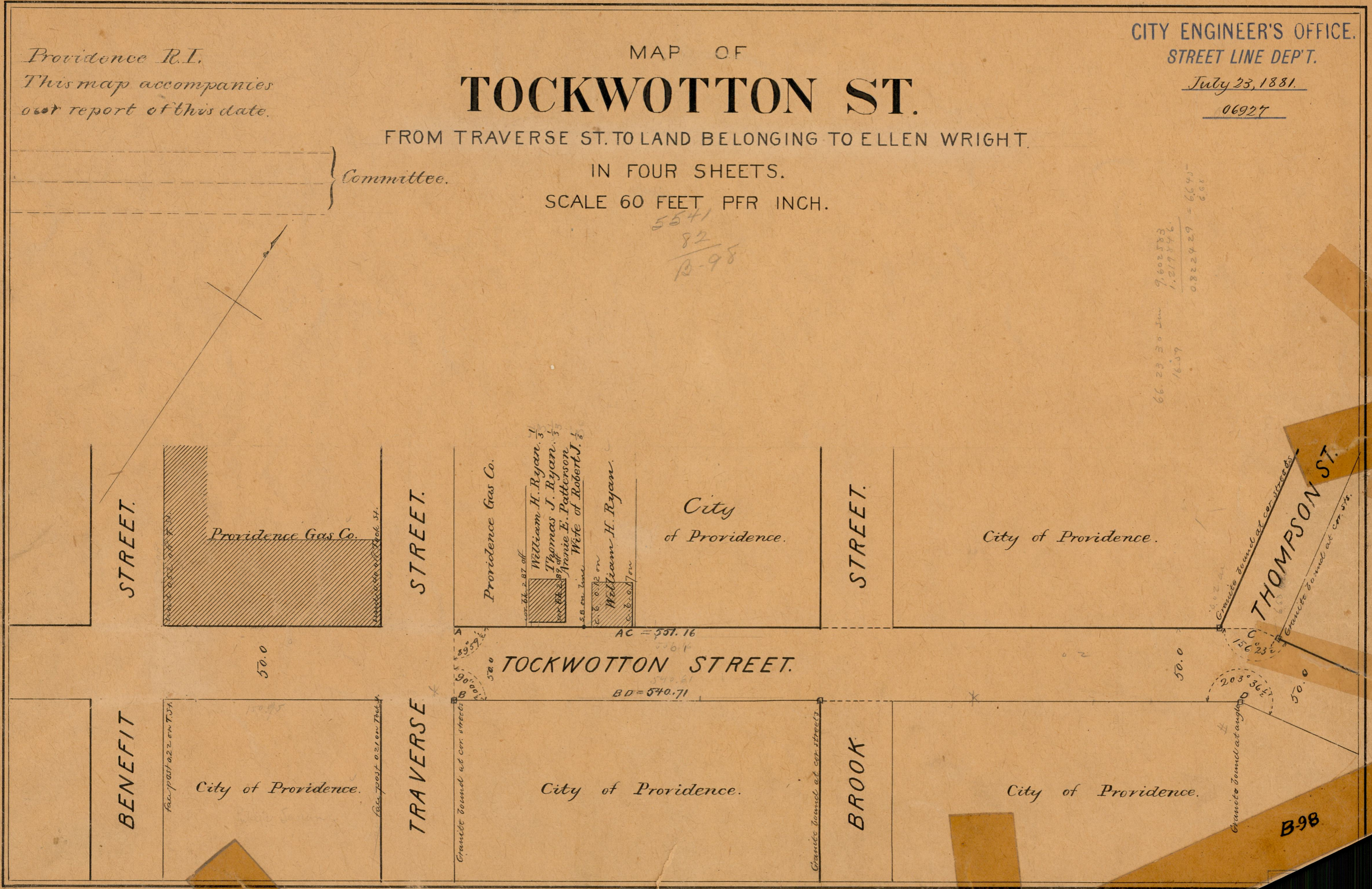
IN FOUR SHEETS.

SCALE 60 FEET PFR INCH.

Committee.

5541
82
B-98

66.23 30 in
16.37
9,602.583
1,217.546
0.822429 = 66.45
6.68



THOMPSON ST.

Granite bound at angle
203° 36'

B98

82
B-