

Providence R. I.
 This map accompanies
 our report of this date

MAP OF

PIKE STREET.

FROM TRAVERSE ST. TO BROOK ST.

SCALE 30 FT. PER INCH

CITY ENGINEER'S OFFICE.

STREET LINE DEPT.

July 23 1881

06924

Committee.

82
 B-95

11340	89287
1127	1427
82830	695079
23680	178894
47360	397188
5055630	7299819

BROOK ST.

Curve found at cor. Street
 119° 52' 40" $AC = 54.56$
 60' 48' 30" $BC = 50.15$
 113° 11' 58" $AB = 250.90$

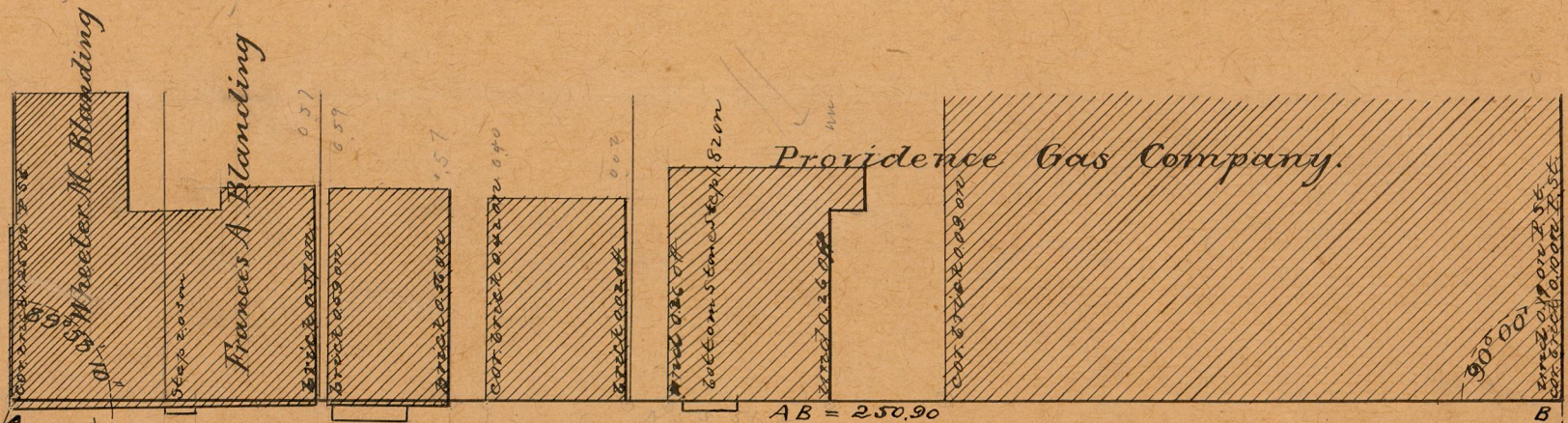
John J. and
 Michael H. Maguire

Patrick Grimes &
 wife Rosanna.

Lois A. Bartlett

Michael Rogers $\frac{1}{2}$
 Charles Rogers $\frac{1}{2}$

Curve found at D
 186° 48' 10" $EB = 45.9$
 53' 11" 50"



TRAVERSE ST.

OFFICE No.	5538
DRAWER	82
SHEET	B-95

OFFICE No.
 DRAWER
 SHEET