

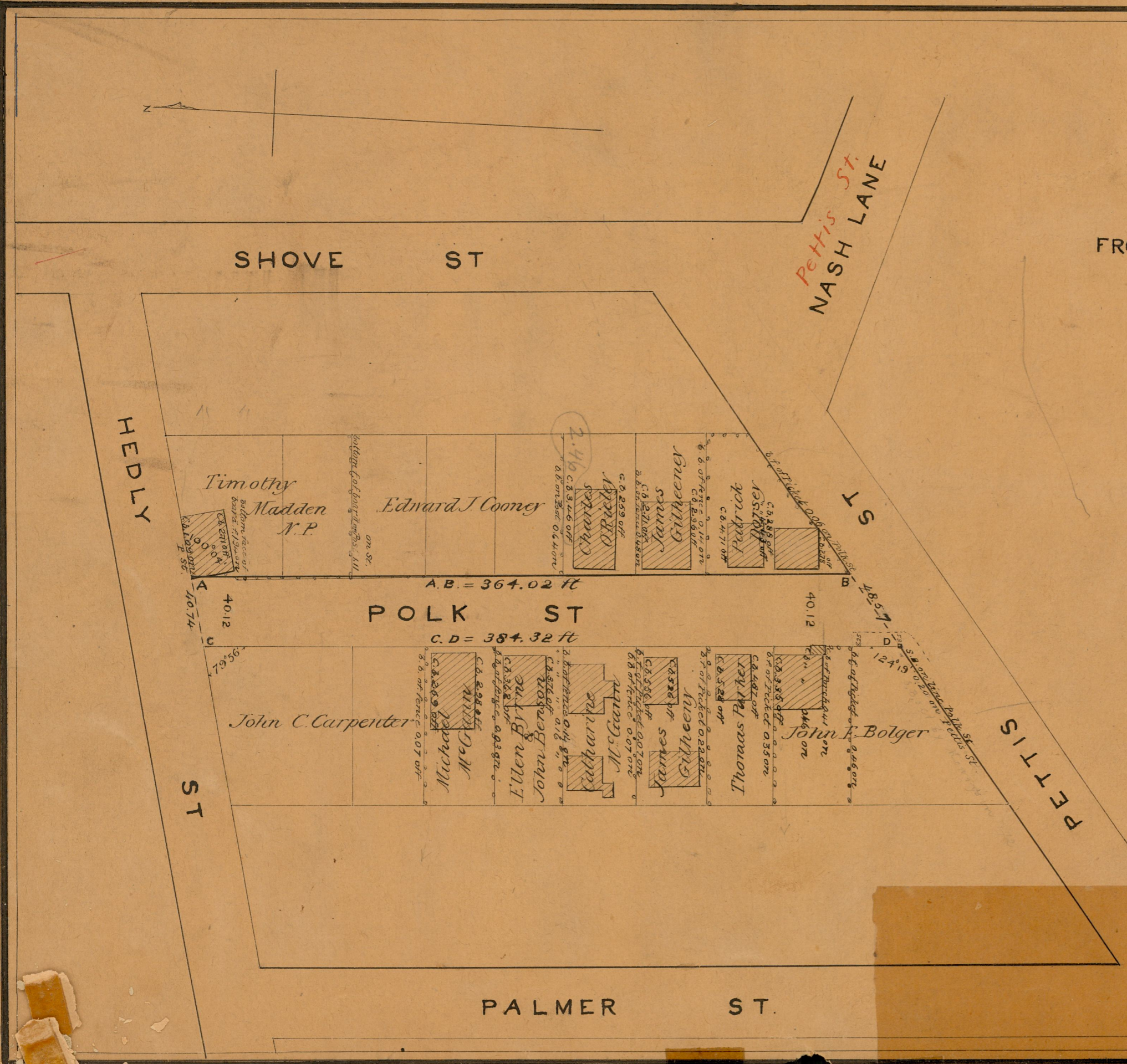
CITY ENGINEER'S OFFICE.
STREET LINE DEPT.
March 14 1877
03750

WGP-6-8

MAP OF
POLK ST
FROM HEDLY ST. TO PETTIS ST.

82
B-9

OFFICE No. 3089
DRAWER " 82
SHEET " B-9



Polk Street extends from the South line of Hedly Street, which is not a Public Highway to the north line of Pettis St as established October 12th 1876.

City Engineer's Office
March 14 1877.

COMPARED.
A. W. D. [Signature]
Ass't Engineer

Scale 60 ft per inch

82
B-9

82
B-9

82-B-9

OFF