

PROVIDENCE, R.I.
CITY ENGINEER'S OFFICE
STREET LINE DEPT.
Nov. 22, 1907.
035409

MAP OF CHALKSTONE AVE.

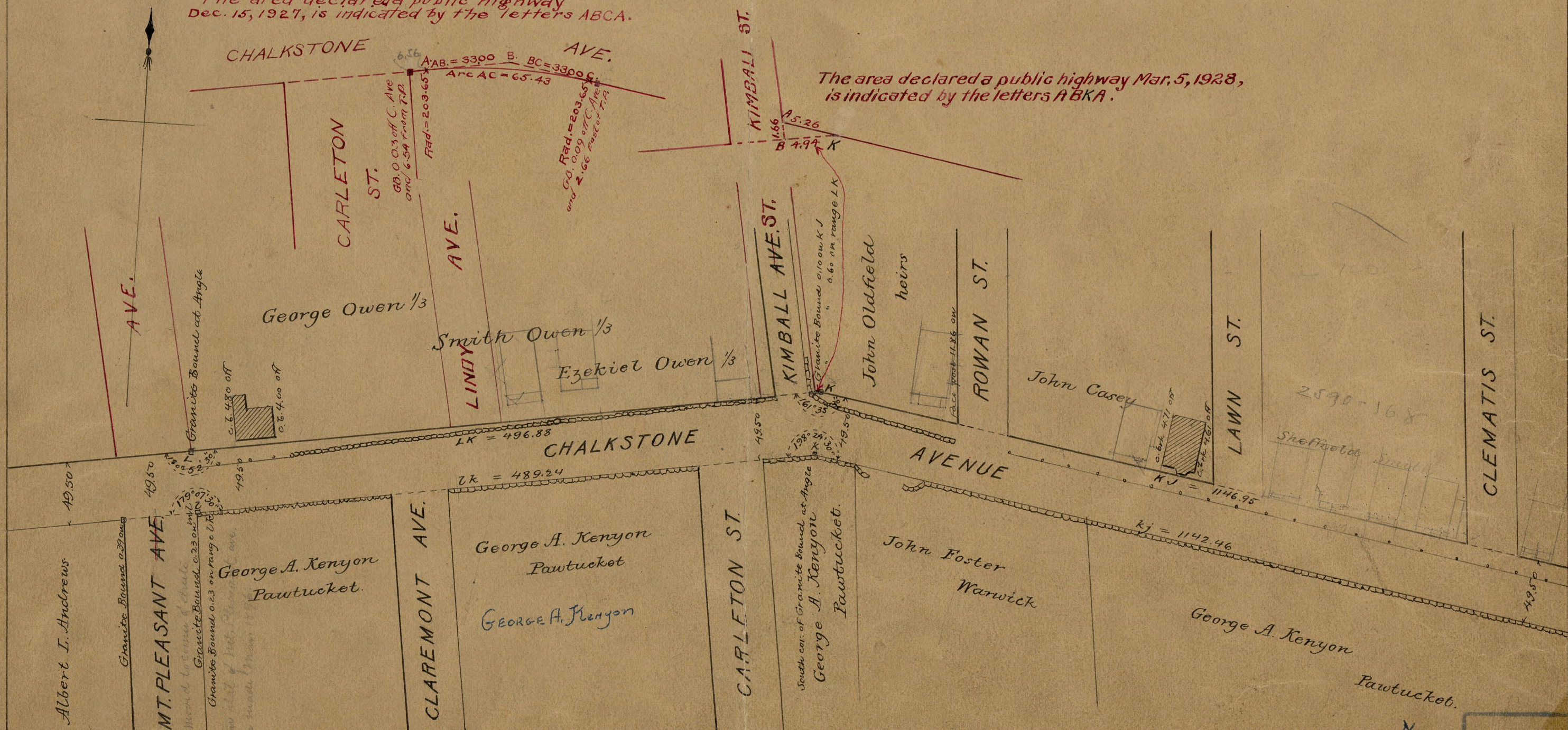
FROM SMITH ST. TO THE CITY LINE
IN ELEVEN SHEETS.
SCALE 80 FEET PER INCH.

Providence, R.I.
This map accompanies our
report of this date

Committee

The area declared a public highway
Dec. 15, 1927, is indicated by the letters ABCA.

The area declared a public highway Mar. 5, 1928,
is indicated by the letters ABKA.



OFFICE No. 5112
DRAWER 82
SHEET B-83

B-83