

Copy of 06308

Jan. 14, 1915

040665

Providence R.I.
This Map accompanies our
Report of this date.

MAP OF WEST RIVER STREET

FROM CHARLES ST. TO BRANCH AVE.
IN 6 SHEETS.

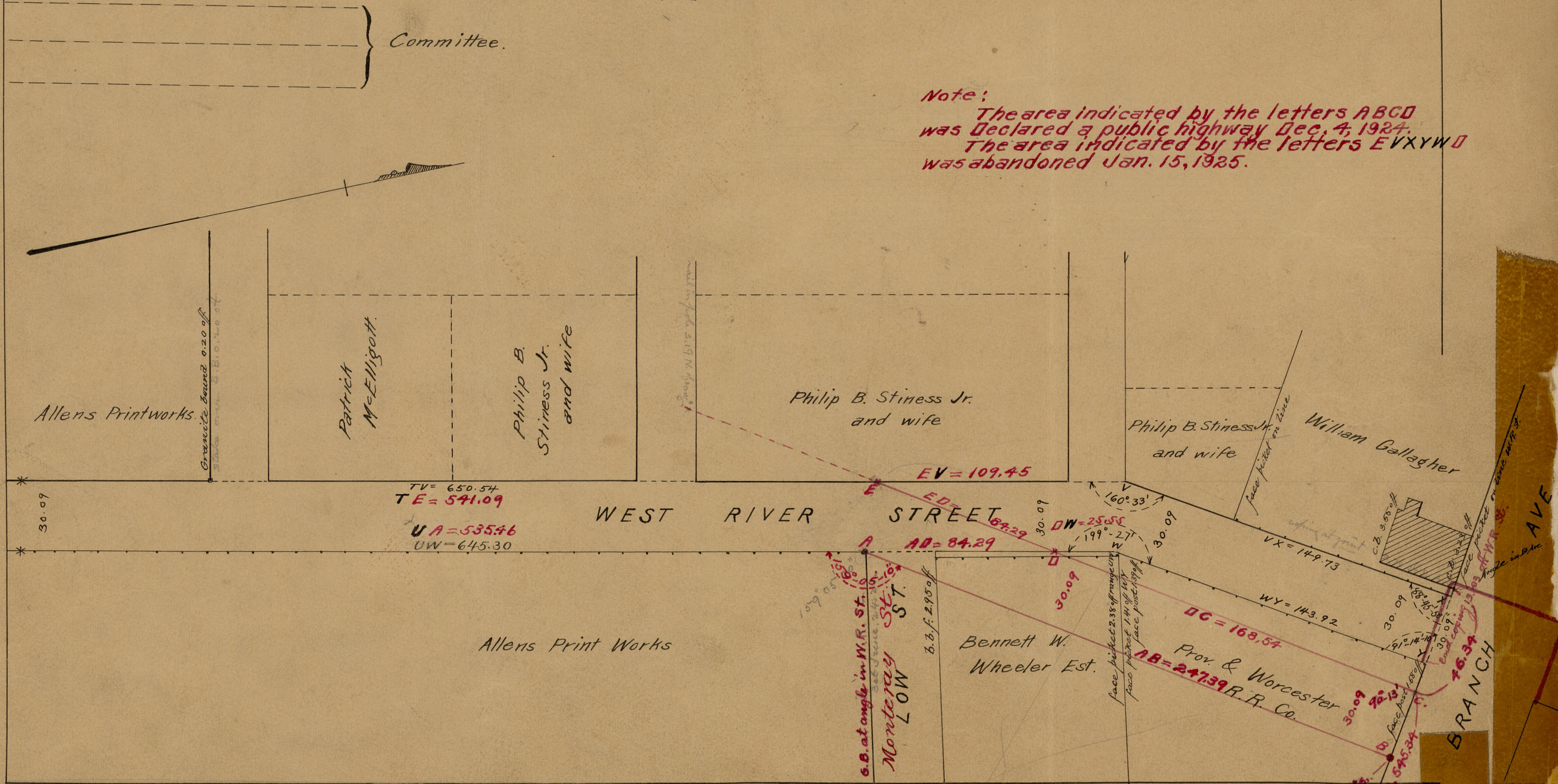
COMPARED.

Metric Gladding
Ass't Engineer.

Committee.

Note:

The area indicated by the letters ABCD
was declared a public highway Dec. 4, 1924.
The area indicated by the letters EVXYW D
was abandoned Jan. 15, 1925.



82
B76

OFFICE N	5257
FRAWER	82
SHEET	B-76

From G.B. 24-21
G.B.
G.B. at cor. St.