

Jan. 14, 1915

040662

Copy of 06305

Providence R.I.  
This Map accompanies our  
Report of this date.

# MAP OF WEST RIVER STREET

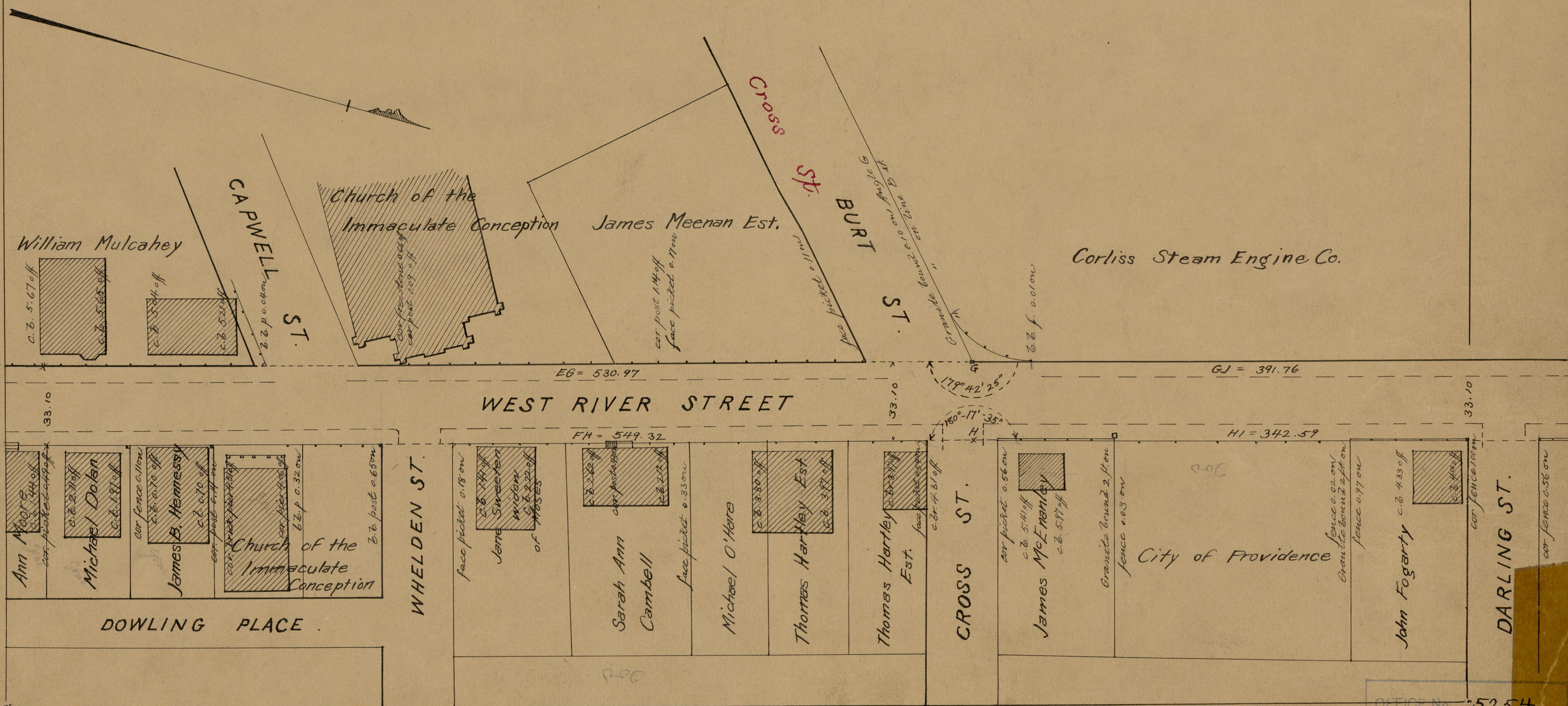
COMPARED

*Andrew Bladding*  
Ass't Engineer.

FROM CHARLES ST. TO BRANCH AVE.  
IN 6 SHEETS.

Committee.

Scale 40 ft. per inch.



OFFICE No. 5254  
DRAWER 82  
SHEET B-73