

Copy of 06303

Dec. 31, 1914

040636

MAP OF

WEST RIVER STREET

FROM CHARLES ST. TO BRANCH AVE.

116 SHEETS

COMPARED.

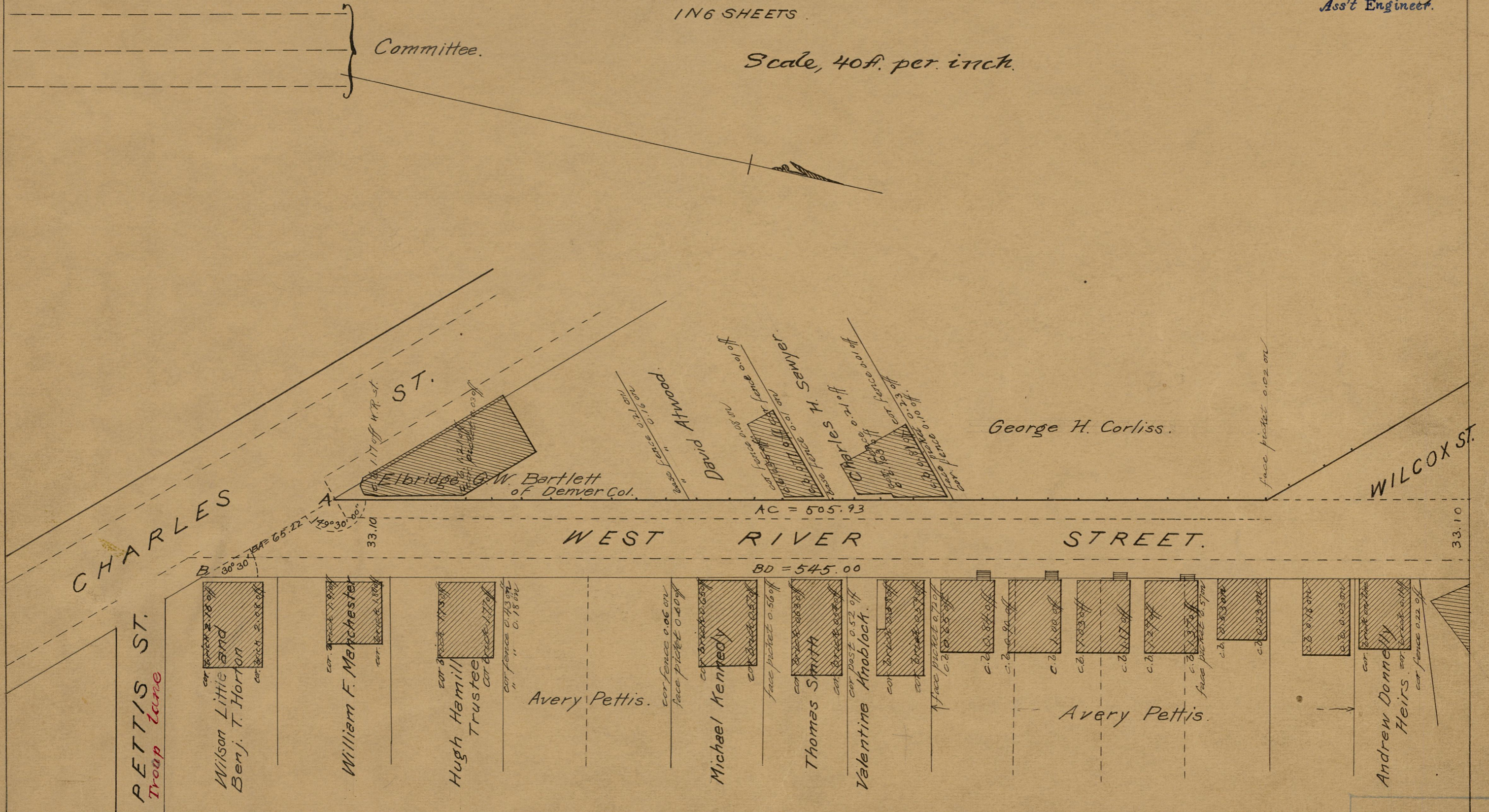
Andrew A. Gladding
Ass't Engineer.

Providence R.I.

This Map accompanies our
Report of this date.

Committee.

Scale, 40f. per inch.



copied by W. Gordon Ward.
Compared by Winslow.

FILE NO. 5252
82
B-71