

Providence R.I.

This map accompanies our report of this date.

Committee

# MAP OF ADMIRAL STREET

FROM CHARLES ST. TO DOUGLAS AVE.

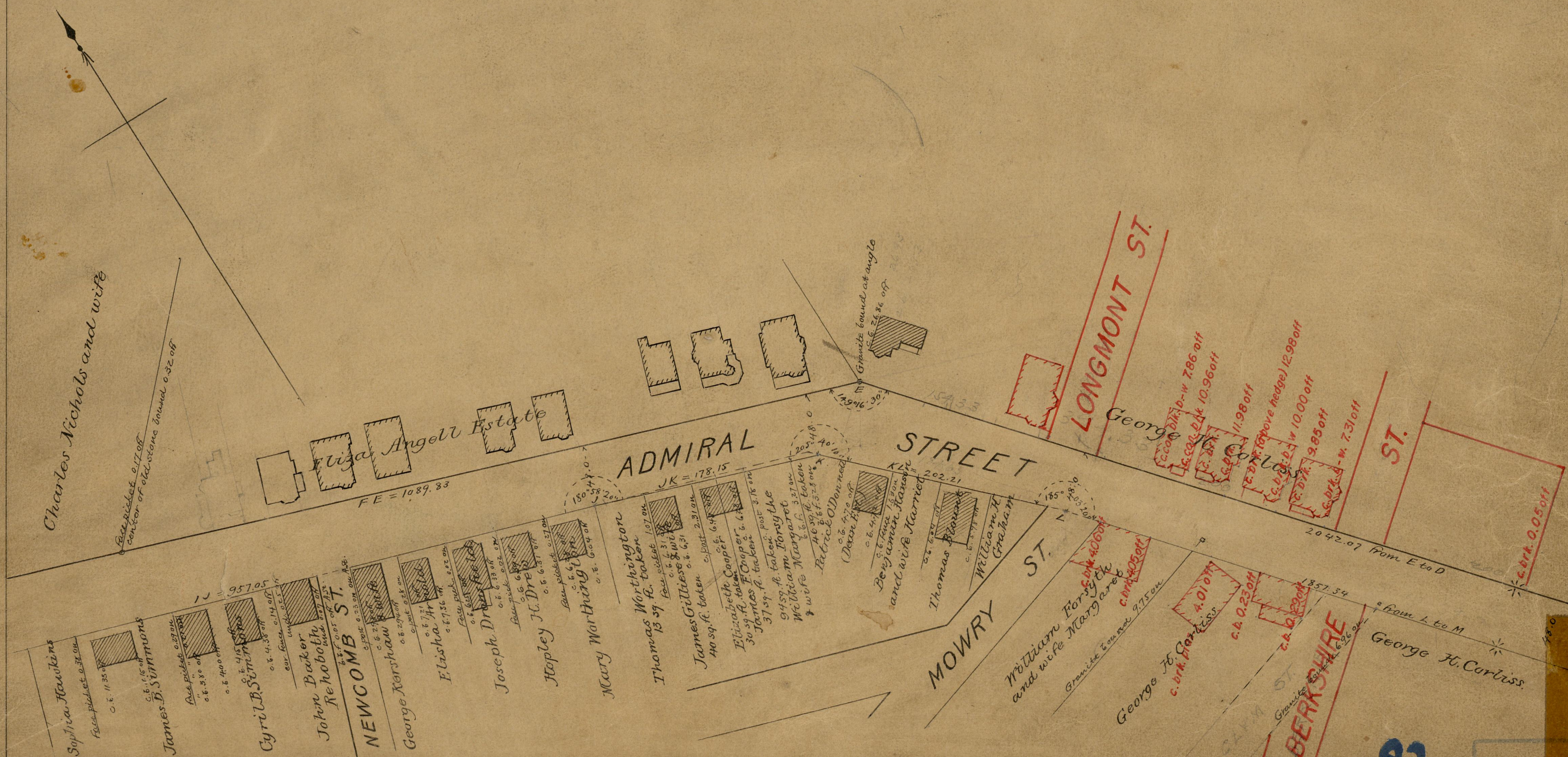
IN FOUR SHEETS

SCALE 80 FEET PER INCH.

PROVIDENCE, R.I.  
CITY ENGINEER'S OFFICE  
STREET LINE DEPT.

Nov. 22, 1907

035403



82  
B-69

52 60  
82  
B-69

OFFICE  
DRAWN  
CHECKED

82  
B-69