

Providence R. I.
This map accompanies
our report of this date.

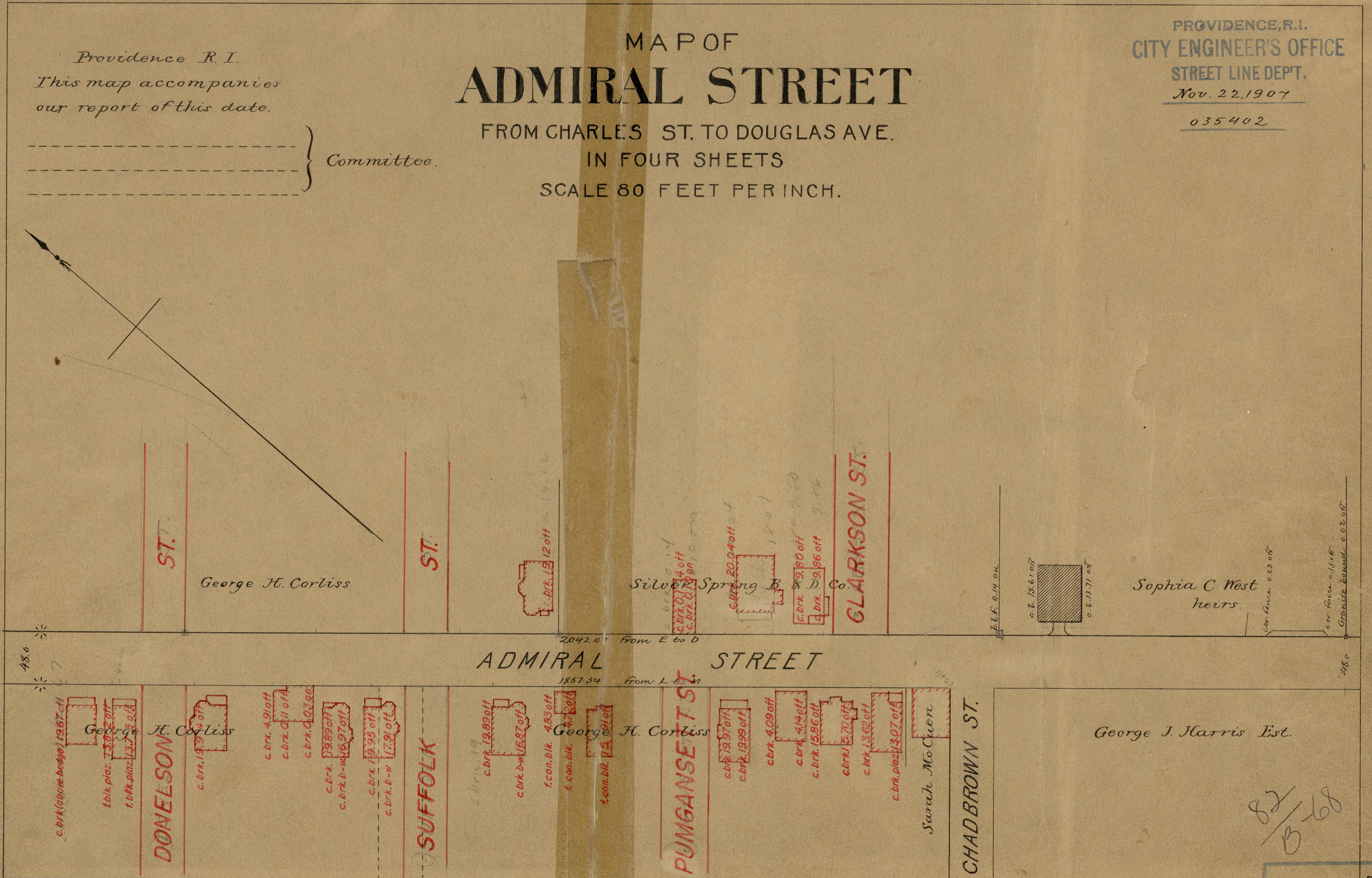
MAP OF ADMIRAL STREET

FROM CHARLES ST. TO DOUGLAS AVE.
IN FOUR SHEETS
SCALE 80 FEET PER INCH.

PROVIDENCE, R. I.
CITY ENGINEER'S OFFICE
STREET LINE DEPT.
Nov. 22, 1907

035402

Committee.



82
B-68

OFFICE No.	5259
DRAWER	82
SHEET	B-68