

1455

PROVIDENCE, R.I.  
CITY ENGINEER'S OFFICE  
STREET LINE DEPT.

Nov. 22, 1907

935401

# MAP OF ADMIRAL STREET

FROM CHARLES ST. TO DOUGLAS AVE.

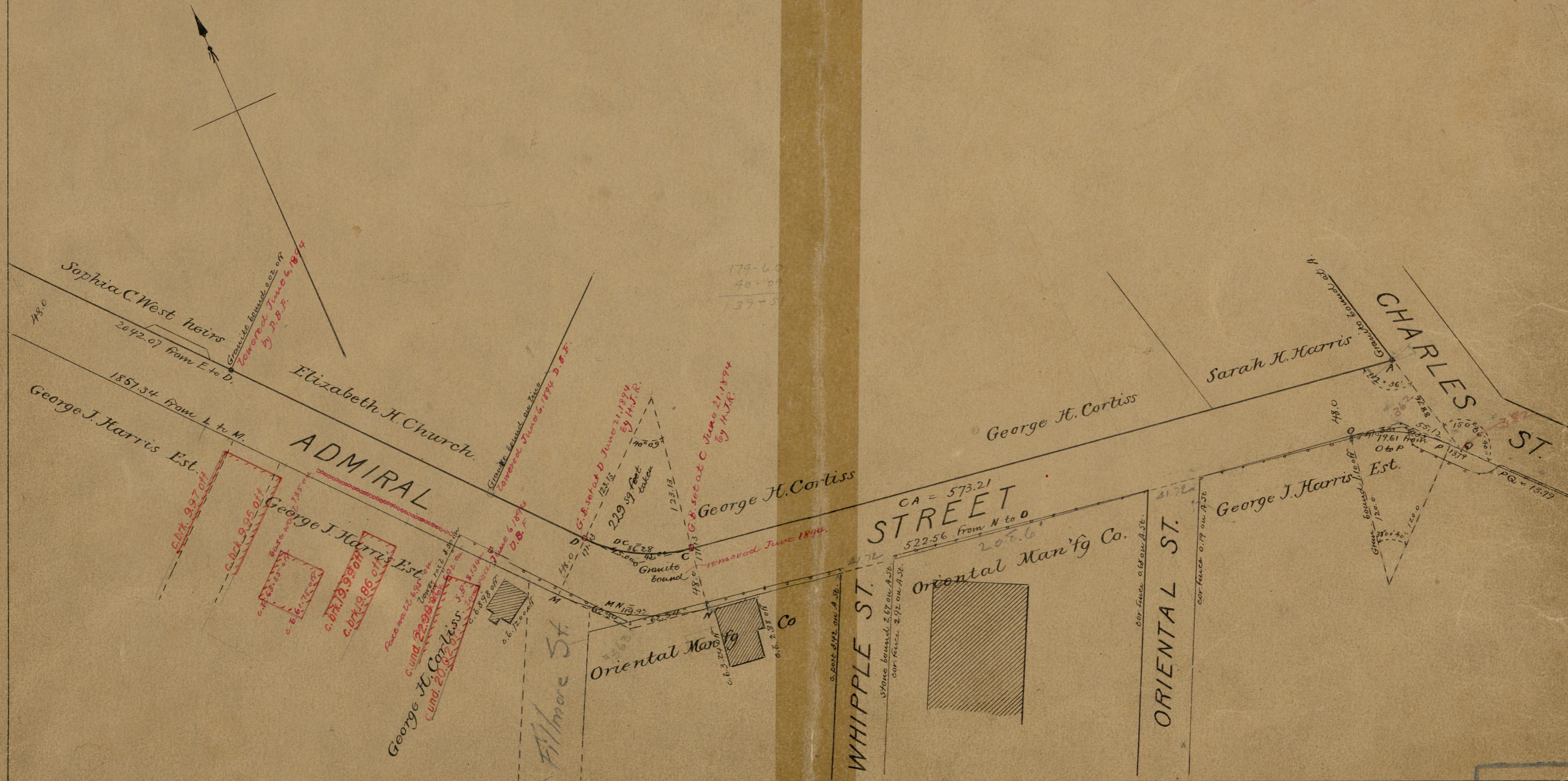
IN FOUR SHEETS

SCALE 80 FEET PER INCH.

Providence R.I.  
This map accompanies  
our report of this date.

Committee

Offsets in red taken June, 1894.



82  
B-67

OFFICE NO. 5258  
DRAWN 82  
SHEET B-67