

485-5-78-79
XIII-60-63

PROVIDENCE, R.I.
CITY ENGINEER'S OFFICE
STREET LINE DEPT.
Nov. 22, 1907
035405

Providence, R.I.

This map accompanies our
report of this date.

MAP OF RICHARDSON ST.

FROM BROAD ST. TO EDDY ST.

IN TWO SHEETS

SCALE 80 FT. PER INCH

Committee.

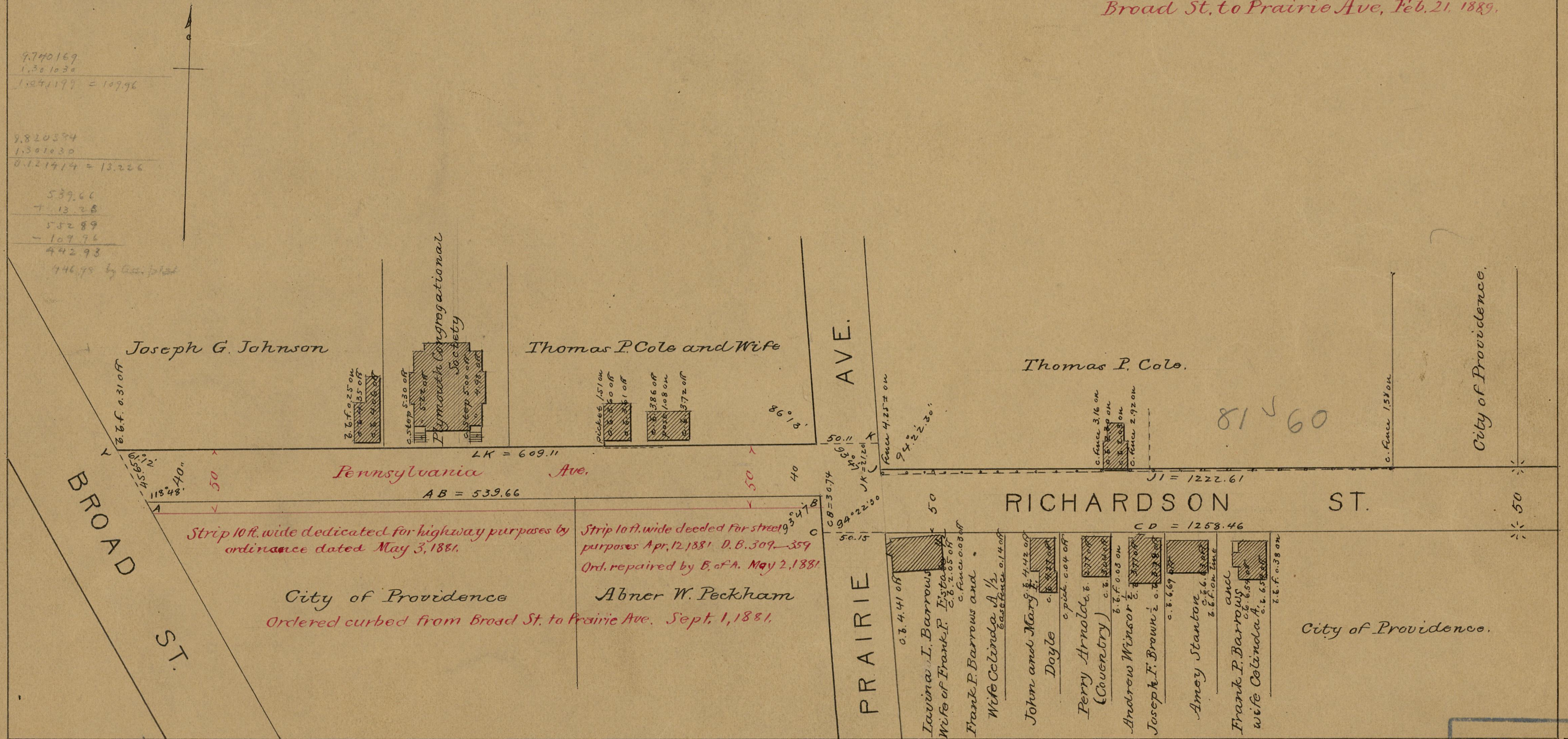
*Changed to Pennsylvania Ave. from
Broad St. to Prairie Ave. Feb. 21, 1889.*

Oct. 61/2
200
9.740169
1.301030
1.074197 = 10796

3.47
200
9.820394
1.301030
0.121414 = 12.226

539.66
+ 13.28
552.89
- 107.96
444.93

444.93 by Assessor



444.93 by cal
440.77 by Assessor
23.58 by cal

OFFICE No 5263
DRAWER 82
SHEET B-64