

FB XIX-52

PROVIDENCE, R.I.
CITY ENGINEER'S OFFICE

STREET LINE DEPT.

Oct. 5, 1896.

025653

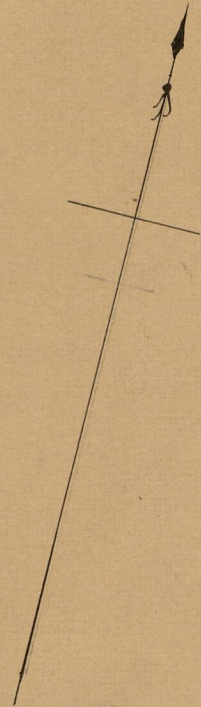
Note The lines indicated (ABCD)
agree with the deed conveying
University Avenue to the city
See deed book 365 page 270.

PLAT OF

UNIVERSITY AVE.

FROM SLATER AVE. TO BLACKSTONE BOULEVARD.

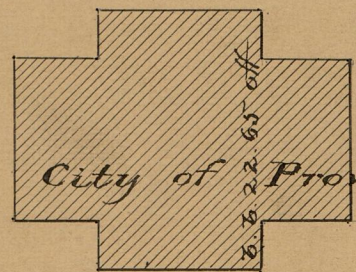
SCALE 40 FEET PER INCH.



SLATER AVE.

SLATER AVE.

DA = 140.00
Granite bound on line U.A.



City of Providence.

AB = 195.00

UNIVERSITY AVE.

DC = 195.00

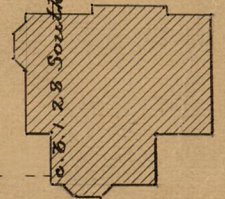
Amy E. Harris,
wife Edward M.

Amy E. Harris,
wife Edward M.

DB = 140.00
CB = 140.00

BLACKSTONE BOULEVARD

DB = 128 South of range AB.



OFFICE No. 13026
DRAWER 82
SHEET B-60