

Jan. 1877

03712

MAP OF ALMY STREET

From High street to Broadway

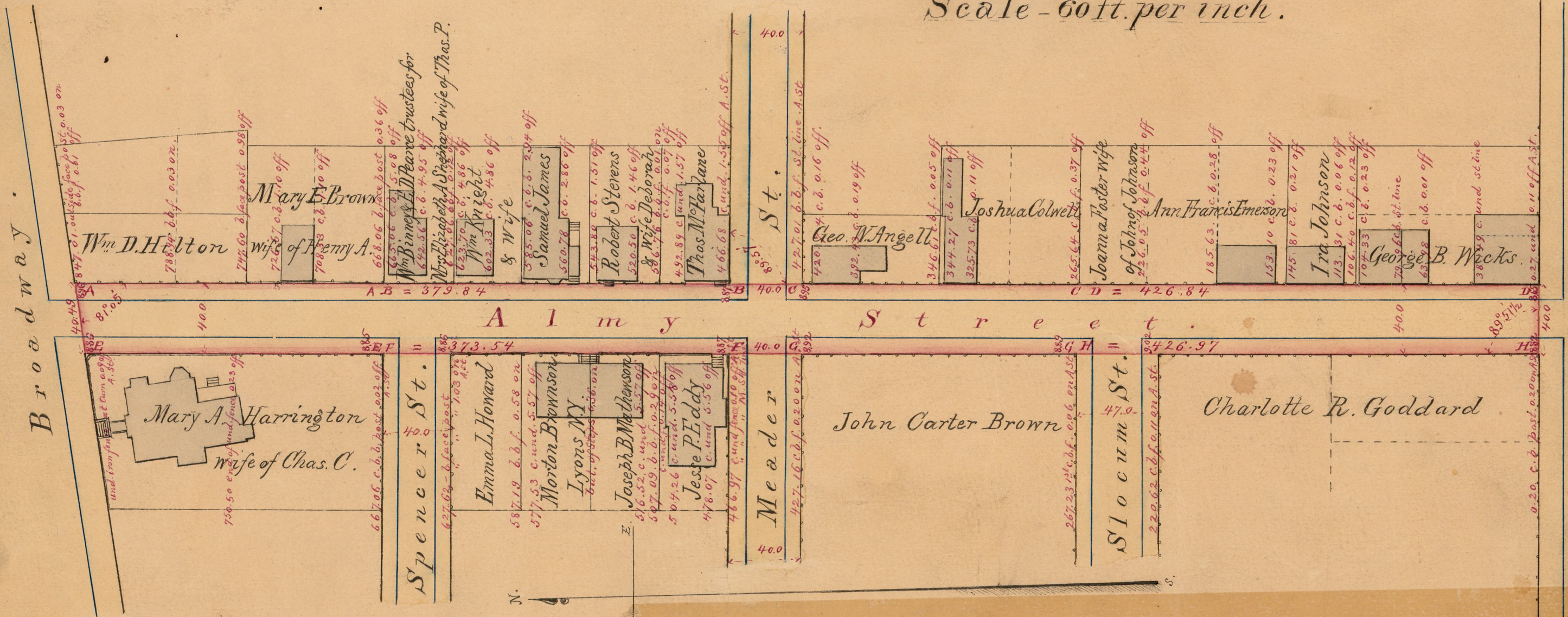
City Engineers Office
Jan. 1877

Scale - 60 ft. per inch.

Note.

Almy street extends from the northerly line of High street as established Nov. 7. 1859 to the southerly line of Broadway as established Sept. 27th. 1852.

Almy street is 160.40 feet from Marshall street.



COMPARED.
Lewis G. Schrack.
Asst Engineer.

OFFICE No. 3064
DRAWER " 82
SHEET " B-6

High Westminister St.

82
B6

OFFICE No. 3064
DRAWER " 82
SHEET " B-6

373.54
426.97
40
840.51