

Providence R.I.
This map accompanies our report
this date.

MAP OF TRANSIT ST.

FROM GOVERNOR ST. TO THE HARBOR LINE.
ON SEEKONK RIVER.
IN TWO SHEETS.

City Engineer's Office
Oct. 1878.

Scale 50 ft. per inch.

COMPARED

Frederic Blodgett
Asst. Engineer.

Changed to East Transit Street.

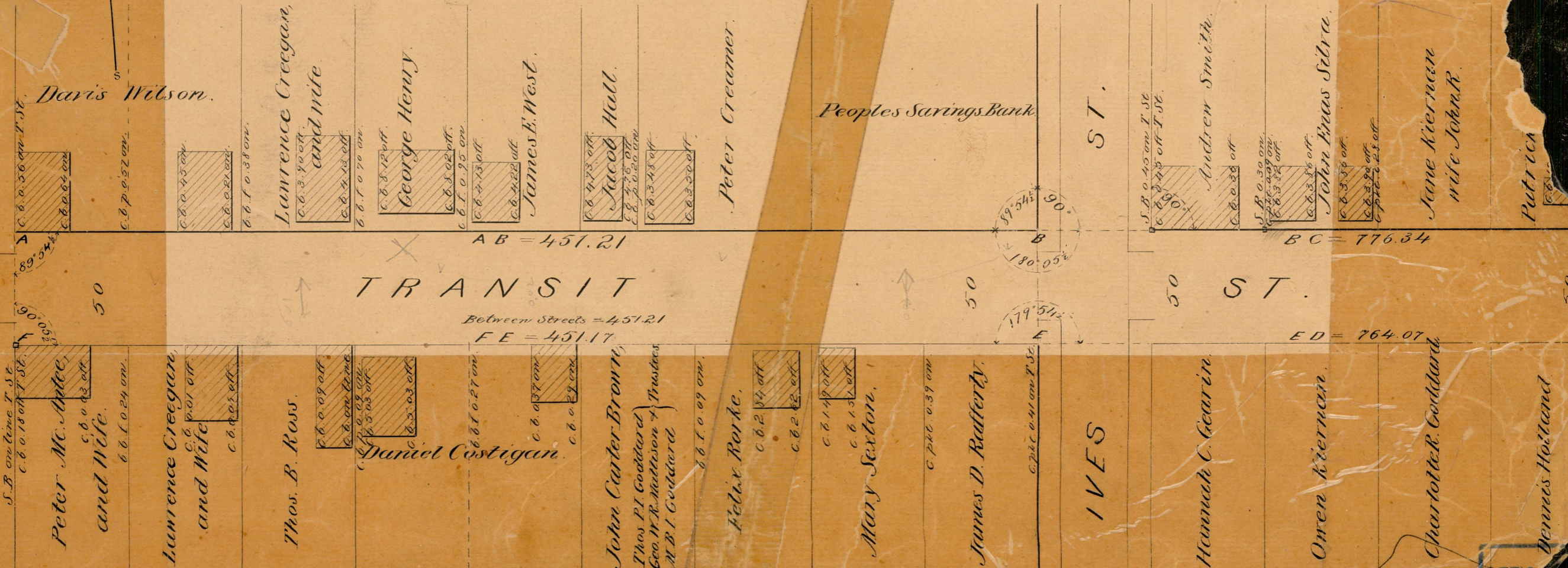
Jan. 20, 1891.

City Engineer

Committee.

3815
82-1358

GOVERNOR ST.



Davis Wilson.
c.b. 0.36 on T. St.
c.b. 0.04 on W.
c.b. 0.52 on W.
c.b. 0.25 on W.
c.b. 0.21 on W.
c.b. 0.38 on W.

Lawrence Creegan,
and wife.
c.b. 3.90 on W.
c.b. 2.12 on W.
c.b. 1.07 on W.

George Henry.
c.b. 8.02 on W.
c.b. 7.13 on W.
c.b. 4.22 on W.

James E. West.
c.b. 4.73 on W.
c.b. 2.75 on W.
c.b. 3.28 on W.
c.b. 3.20 on W.

Peter Creamer.

Peoples Savings Bank.

Andrew Smith.
c.b. 0.45 on T. St.
c.b. 2.45 on T. St.
c.b. 0.28 on W.

John Frazz Silva.
c.b. 0.50 on W.
c.b. 0.09 on W.
c.b. 3.32 on W.
c.b. 2.28 on W.
c.b. 2.28 on W.

Jane Kiernan
wife John R.

Patricia

Peter Mc. Ahlee
and wife.
c.b. 0.13 on W.
c.b. 1.02 on W.

Lawrence Creegan,
and wife.
c.b. 0.01 on W.
c.b. 0.05 on W.

Thos. B. Ross.

Daniel Costigan.
c.b. 0.09 on W.
c.b. 0.09 on W.
c.b. 5.03 on W.
c.b. 2.03 on W.

John Carter Brown.
c.b. 0.37 on W.
c.b. 0.29 on W.

John Carter Brown,
Thos. P. Goddard &
Geo. W. R. Mattison Trustees
M. B. I. Goddard.
c.b. 1.09 on W.

Felix Borke.

Mary Sexton.
c.b. 1.49 on W.
c.b. 1.51 on W.

James D. Raftery.

Hannah C. Gearin.

Owen Kiernan.

Charlotte R. Goddard.

Dennis Holland

3815
82
B-58

OFFICE

TRANSIT ST.

FROM GOVERNOR ST. TO THE HARBOR LINE.

ON SEEKONK RIVER.
IN TWO SHEETS.

City Engineer's Office
Oct. 1878.

Scale 50ft. per inch.

COMPARED

Archie G. Gladding
Asst. Engineer.

Changed to East Transit STREET.

Jan. 20, 1891.

3815
82-1858

Committee.

Evidence R.I.
is map accompanies our report
this date.

GOVERNOR ST.

ST.

50

ST.

50

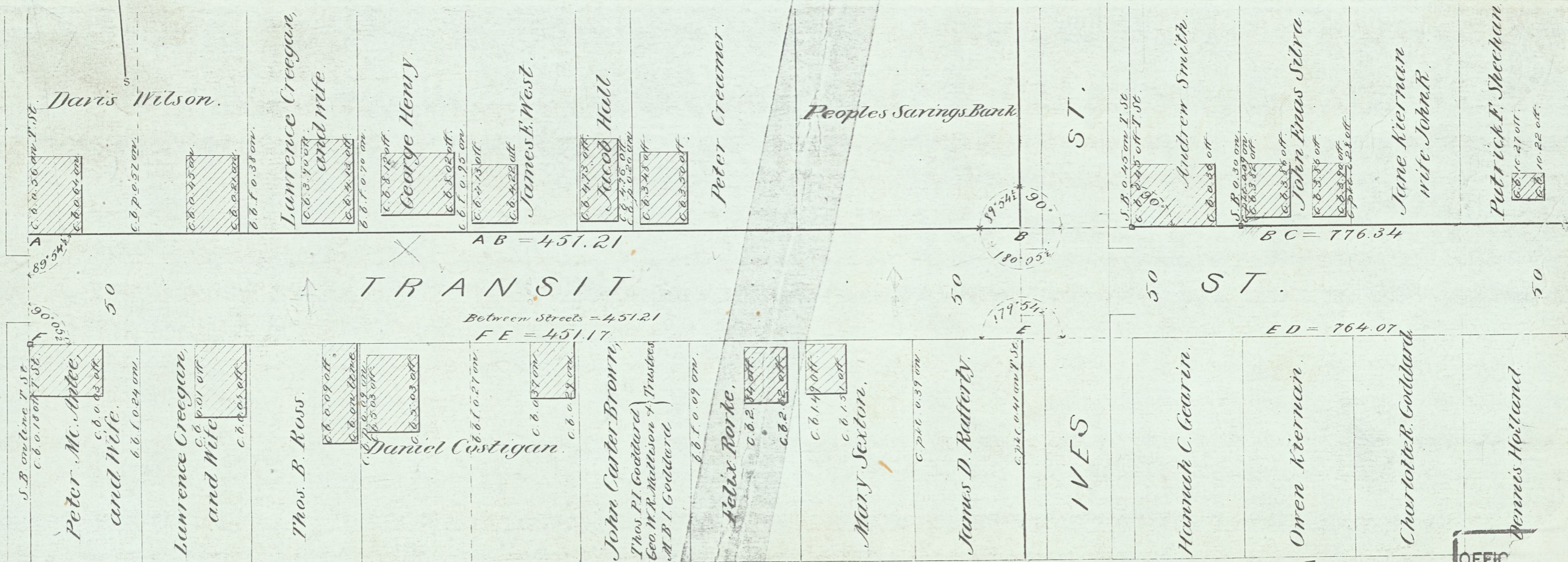
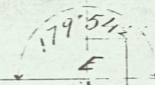
TRANSIT

Between Streets = 451.21
FE = 451.17

ED = 764.07

AB = 451.21

BC = 776.34



3815
82
B-58

OFFICE
DR

OFFICE
DR