

MAP OF PRAIRIE AV.

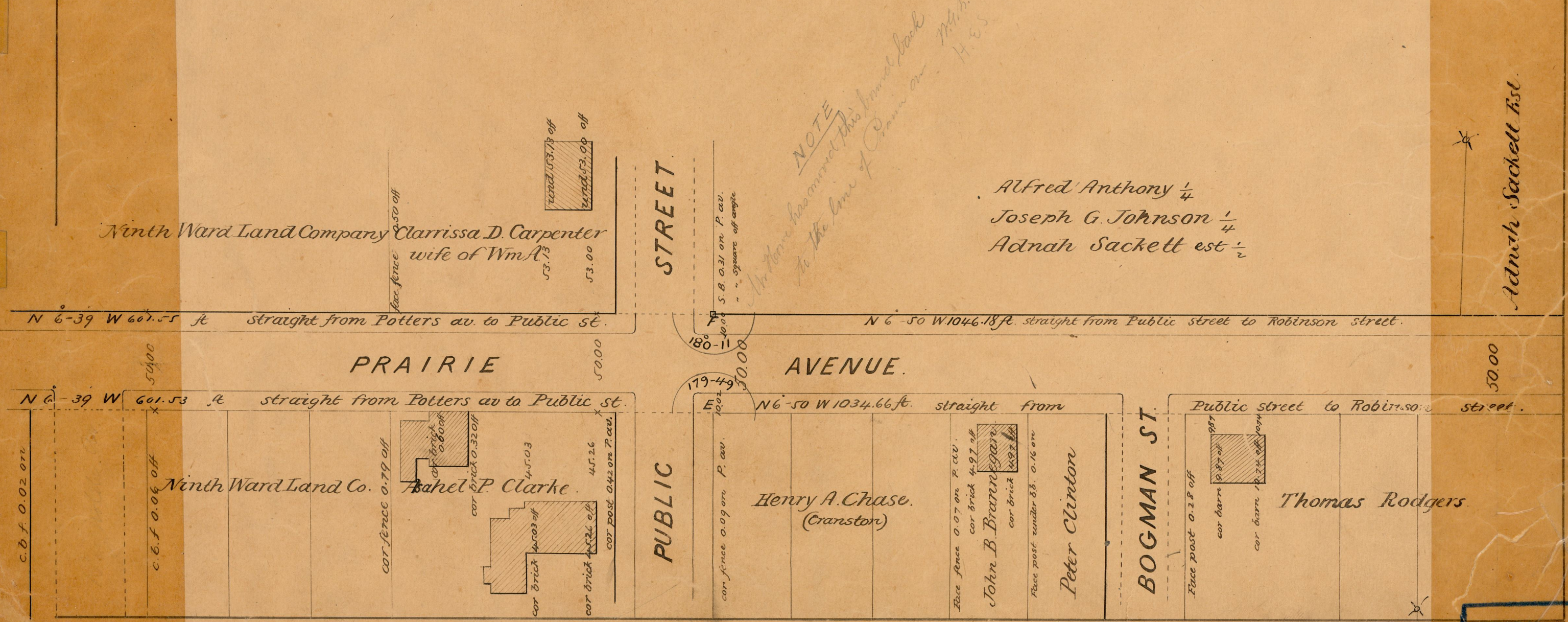
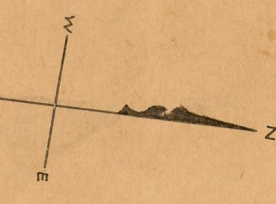
FROM DUDLEY ST. TO THURBERS AV.
IN 7 SHEETS.

City Engineers Office
Apr. 1878 ~~Nov. 1877~~
Scale 50 feet per inch.
COMPARED.
Wm. C. Brennan
Ass't Engineer.

OFFICE No. 3592
DRAWER " 82
SHEET " B-38

CITY ENGINEER'S OFFICE.
STREET LINE DEPT.

Apr. 1878
C43.55



NOTE
Mr. Home has moved this house back
to the line of Crown on M.H.S.
H.E.S.

Alfred Anthony $\frac{1}{4}$
Joseph G. Johnson $\frac{1}{4}$
Adnah Sackett est $\frac{1}{2}$

Adnah Sackett Est.

82
B-38

OFFICE No. 3592
DRAWER " 82
SHEET " B-38