

CITY ENGINEER'S OFFICE.
STREET LINE DEPT.

Aug. 1877
04022

H.E.S.-V-59-60

MAP OF FEDERAL ST

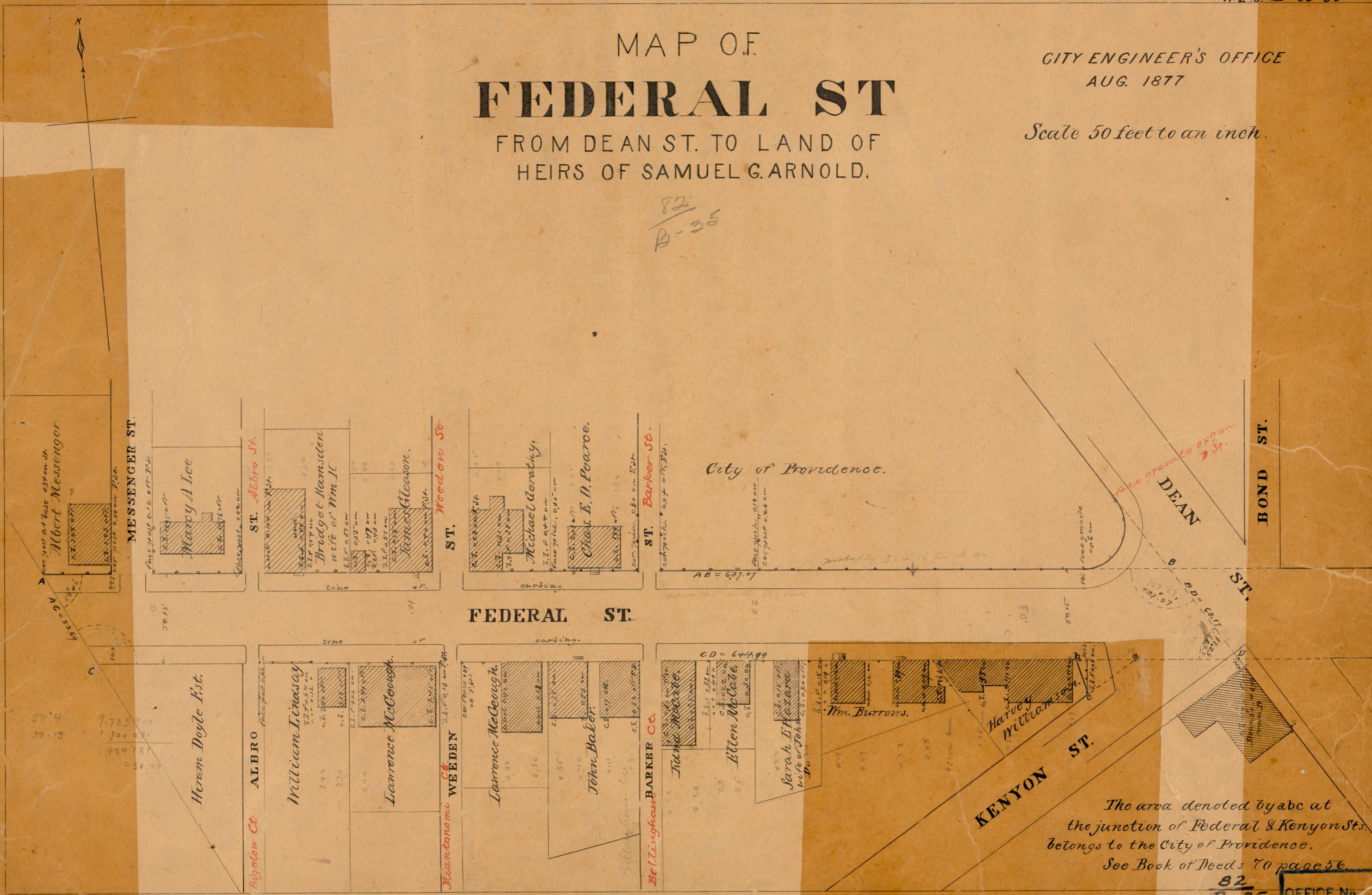
FROM DEAN ST. TO LAND OF
HEIRS OF SAMUEL G. ARNOLD.

CITY ENGINEER'S OFFICE
AUG. 1877

Scale 50 feet to an inch.

OFFICE No. 3314
DRAWER " 82
SHEET " B-35

82
B-35



The area denoted by abc at
the junction of Federal & Kenyon Sts.
belongs to the City of Providence.
See Book of Needs 70 page 56.

82
B-35

OFFICE No. 3314
DRAWER " 82