

CITY ENGINEER'S OFFICE,
STREET LINE DEPT.

Jan. 1878
04264

SHEET NO. 2.

MAP OF JACKSON AV.

FROM BECKWITH ST TO POTTER'S AV.

IN FOUR SHEETS.

82
B-28

City Engineer's Office,

January 1878.

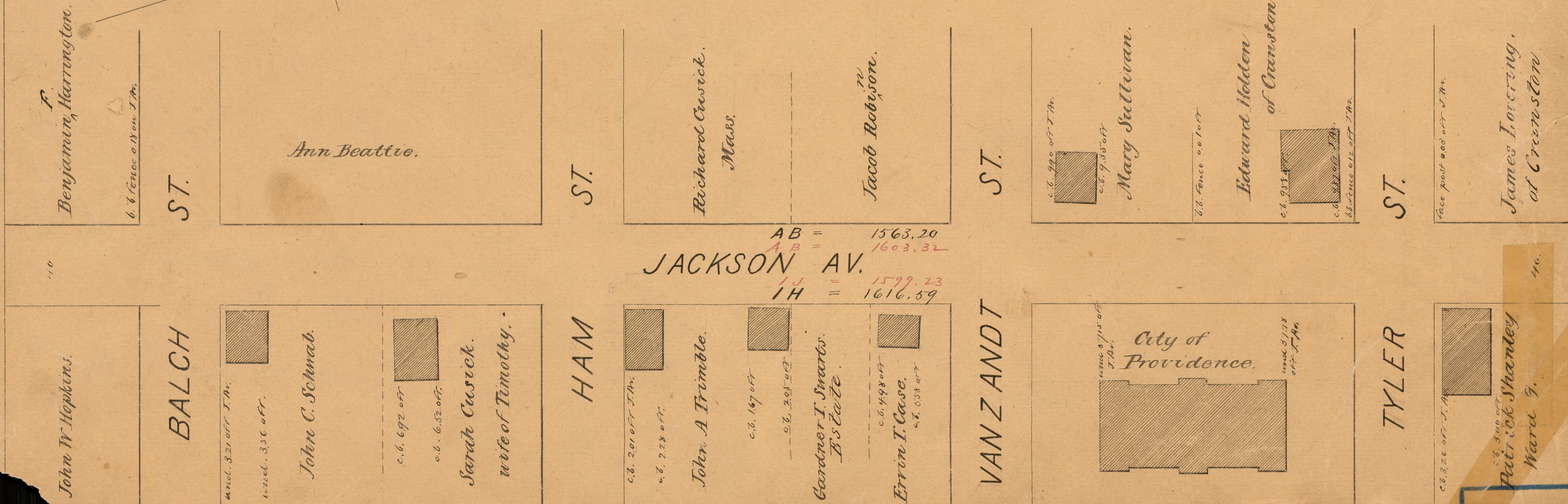
Scale 50 feet to an inch.

COMPARED.

Frederic Blodding
Ass't Engineer.

Changed to Cathoun Ave. Dec. 7, 1899.

OFFICE No. 3517
DRAWER " 82
SHEET " B-28



82
B-28

87
B28

82-B-28

OFFICE No. 3517
DRAWER " 82
SHEET " B-28