

CITY ENGINEER'S OFFICE.
STREET LINE DEPT.

Jan. 1878
04263

SHEET NO 1

SHEET No 1

H.E.S. V-146-149

MAP OF JACKSON AV.

FROM BECKWITH ST. TO POTTER'S AV.

IN FOUR SHEETS.

City Engineer's Office.

January 1878.

Scale 50 feet to an inch.

COMPARED.

Fredrick Bloddy
Ass't Engineer.

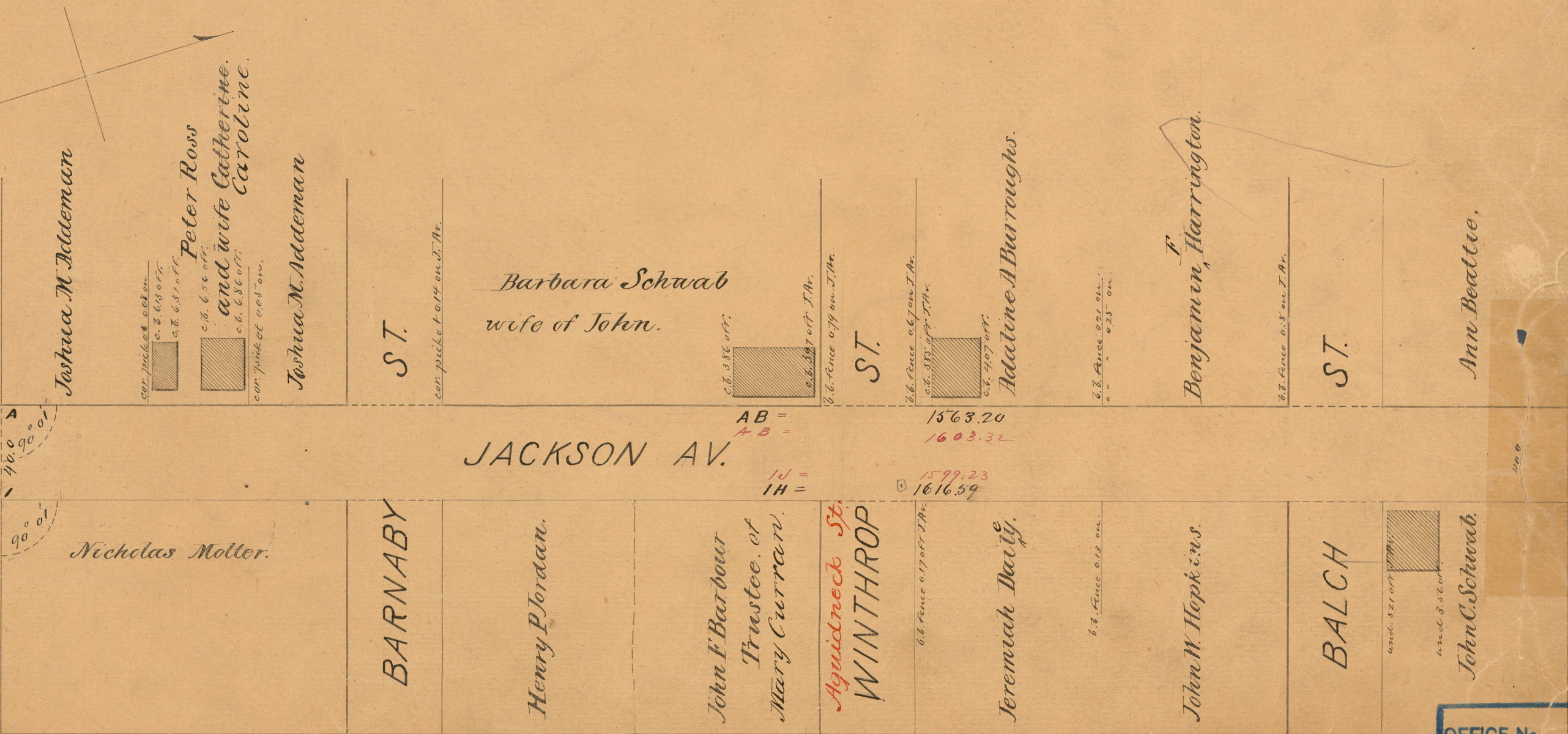
Changed to Cathoun Ave Dec. 7, 1899.

Prudence R. J.
This map accompanies our
report of this date.

Committee

Changes from stone bound in the center line of Pacific Ave. to stone bound in the center line of Fifth St.

20 BECKWITH ST. 20



OFFICE No. 3516
DRAWER " 82
SHEET " B-27

OFFICE No. 3516
DRAWER " 82
SHEET " B-27