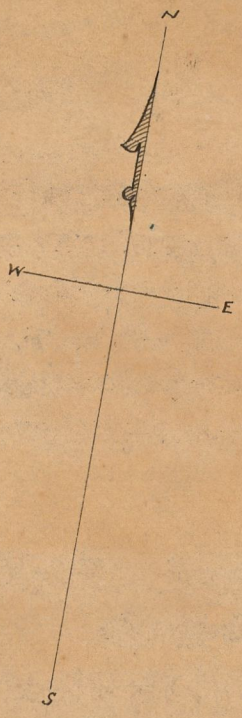


CITY ENGINEER'S OFFICE.
STREET LINE DEPT.

Sept. 21, 1877
04064



MAP OF WILLARD ST. FROM PLAIN ST. TO EDDY ST.

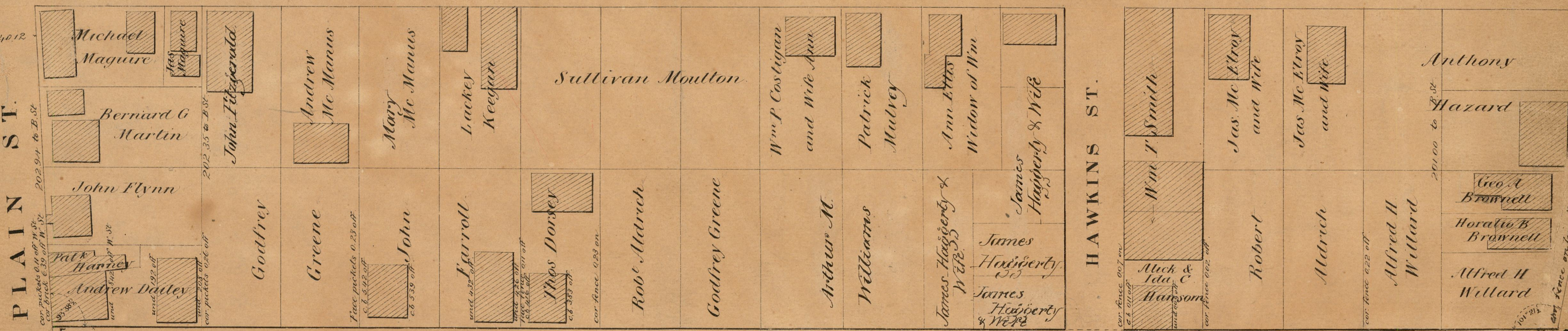
City Engineer's Office
September 21, 1877.
Scale of 60 feet to one inch.

Changed to Willard Ave. Sept. 16, 1886.

WGB-6-3

OFFICE No. 3352
DRAWER " 82
SHEET " B-19

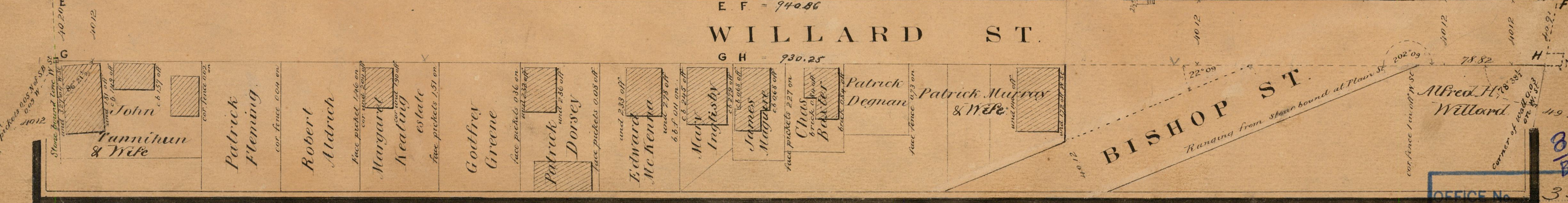
BLACKSTONE ST



PLAIN ST.

HAWKINS ST.

WILLARD ST.
E F = 940.86
G H = 930.25



EDDY ST.

BISHOP ST.
Ranging from shore bound at Plain St.

OFFICE No. 3352
DRAWER " 82
SHEET " B-19

Dec 21 1876

*Charles Anthony - Daniel & Charles
Cord 234
Lanning & Hart*

Board's order March 1, 1877

from Plane to Eddy