

PROVIDENCE, R.I.
CITY ENGINEER'S OFFICE
STREET LINE DEPT.

Jan. 23, 1884.

09642

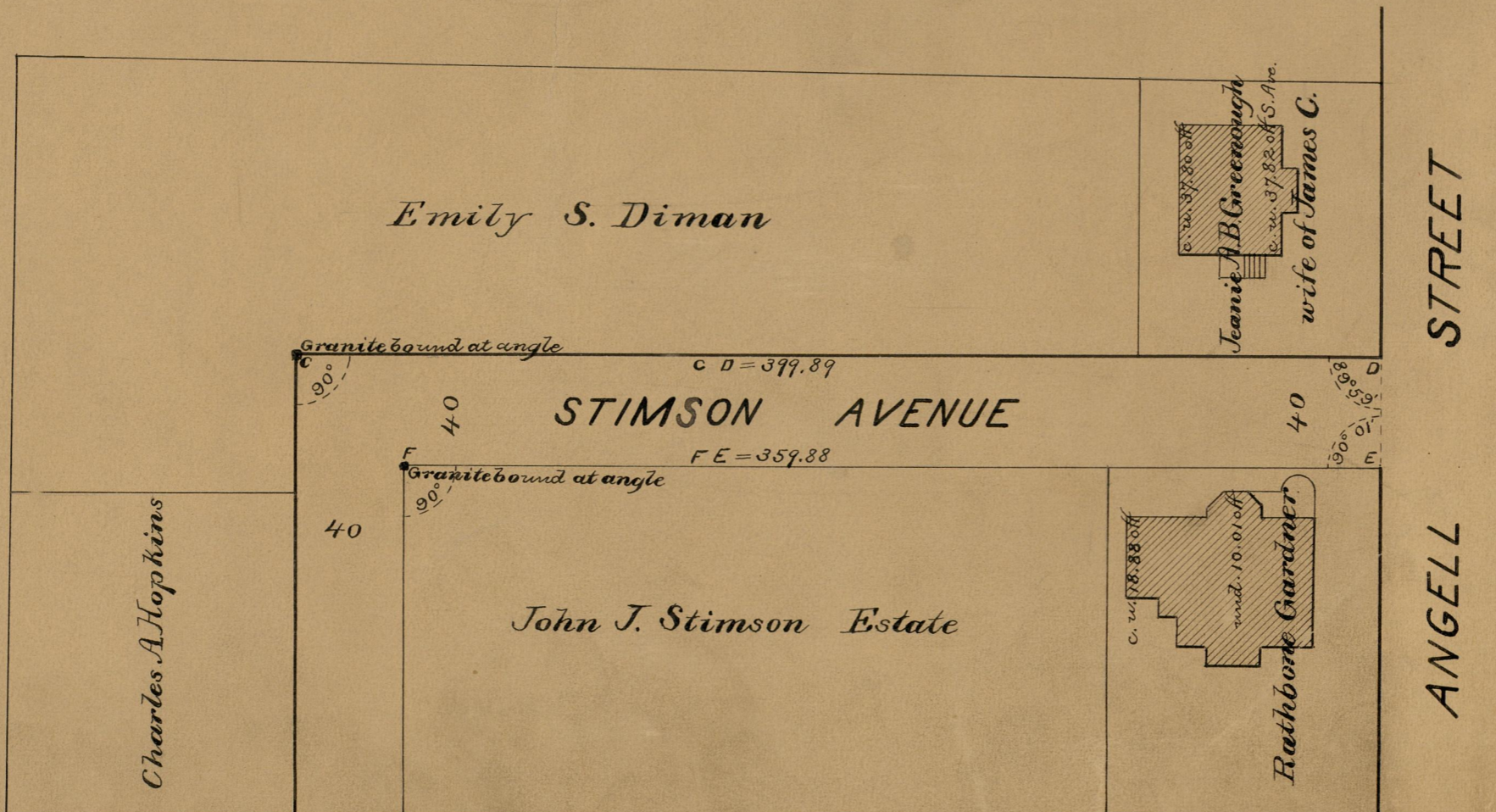
Providence R.I.
This map accompanies
our report of this date.

MAP OF
STIMSON AVENUE

FROM HOPE ST. TO ANGELL ST.

IN TWO SHEETS

SCALE 60 FEET PER INCH



OFFICE No. 7802

82
B-150

DRAWER 82

B-150