

Copy of 09641

PROVIDENCE, R.I.
CITY ENGINEER'S OFFICE
STREET LINE DEPT.

February 8, 1915

040695

MAP OF

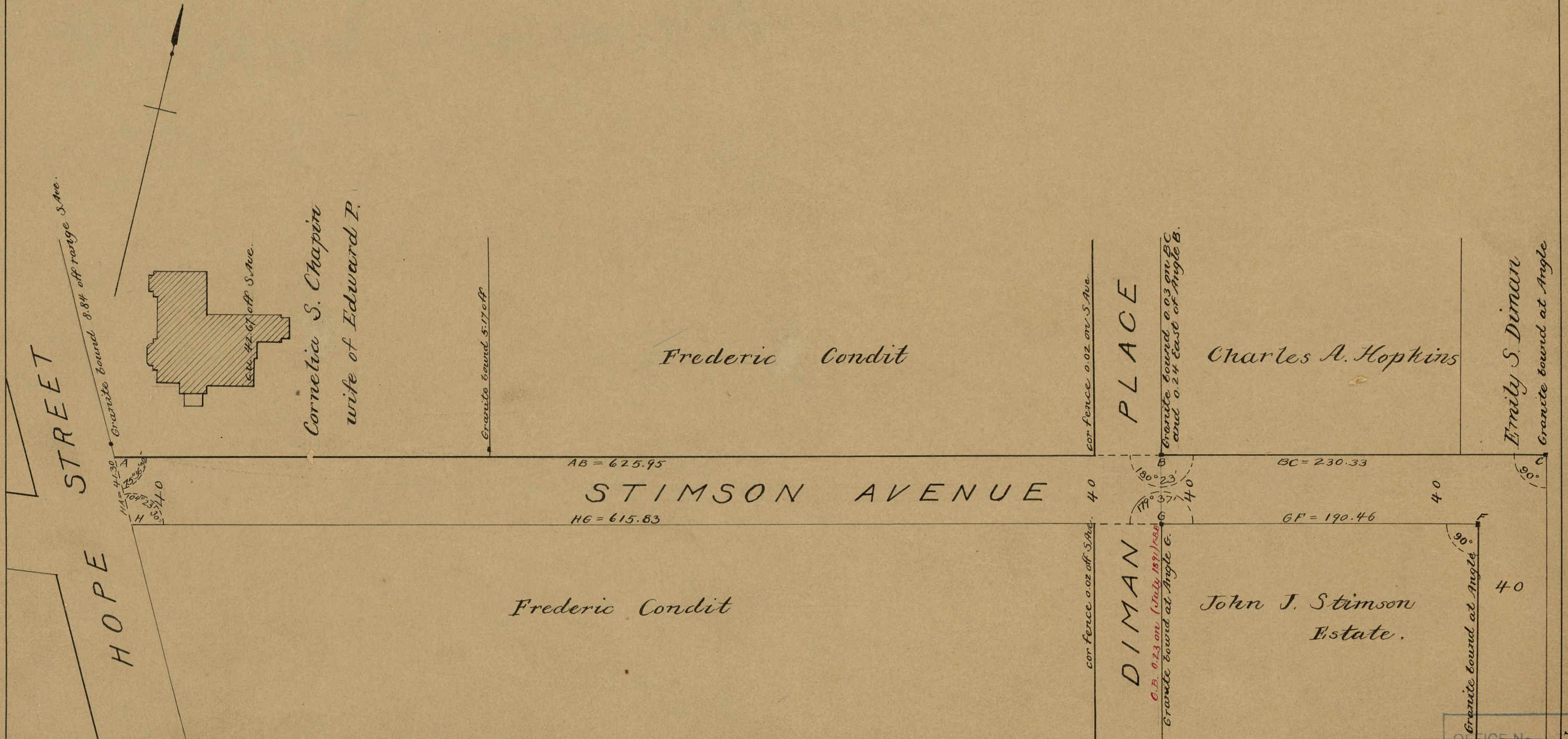
STIMSON AVENUE

FROM HOPE ST. TO ANGELL ST.

IN TWO SHEETS

SCALE 60 FEET PER INCH.

Providence R.I.
This map accompanies
our report of this date.



OFFICE No. 7801
 DRAWER 82
 SHEET B-149