

PROVIDENCE, R. I.
CITY ENGINEER'S OFFICE,
STREET LINE DEP'T.

Jan. 7, 1884.

09612

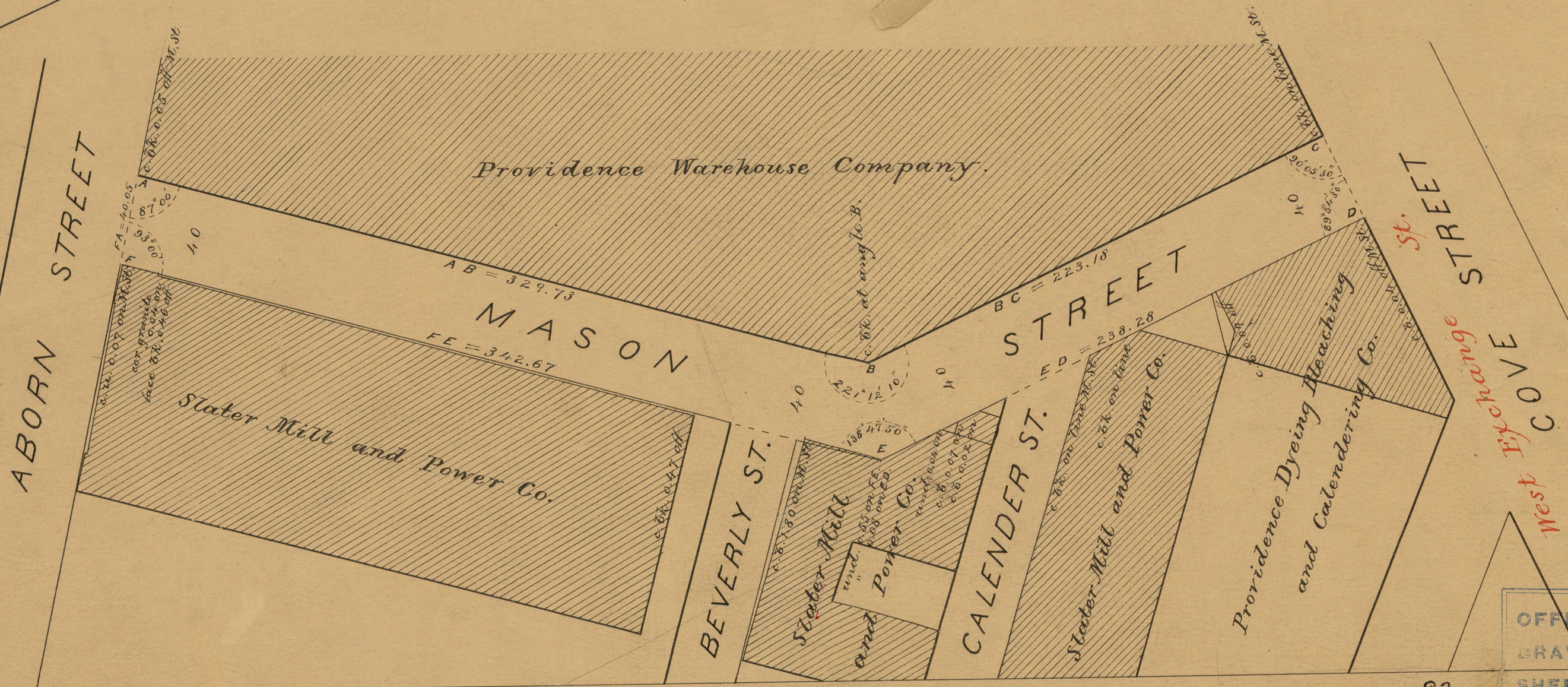
Providence R.I.
This map accompanies
our report of this date.

MAP OF
MASON STREET

FROM COVE ST. TO ABORN ST.

SCALE 50 FEET PER INCH. 7789

82
B-145



OFFICE No. 7789
DRAWER ,, 82
SHEET ,, B-145

82
B-145