

Report approved May 18, 1893

PROVIDENCE, R. I.
CITY ENGINEER'S OFFICE
STREET LINE DEPT.

Aug. 2, 1890

016735

Providence, R. I.
This plat accompanies
our report of this date.

PLAT OF CANAL STREET

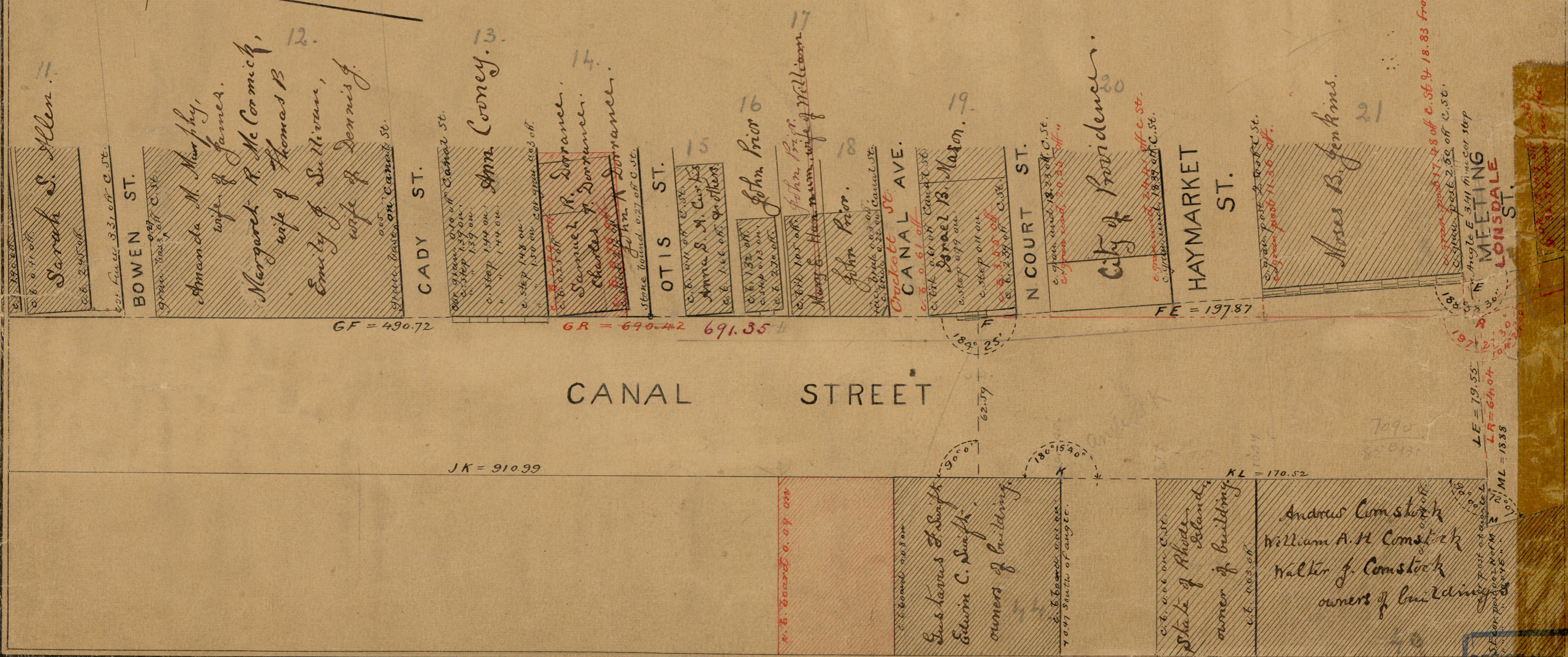
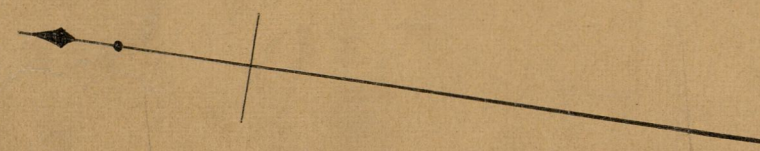
FROM SMITH ST. TO MARKET SQUARE

IN FOUR SHEETS

SCALE 40 FEET PER INCH.

7090
82
B-131

Notes in red ink show changes
made in November 1892.
Adopted May 18, 1893.



c. 18.83 from angle.

c. 18.83 off c. st.
c. 18.83 off c. st.
c. 18.83 off c. st.

LE = 19.55
LR = 64.04
ML = 18.88

7090
82
B-131

OFFICE NO. 7090
DRAWER 82
SHEET -131