

Nov. 22, 1907

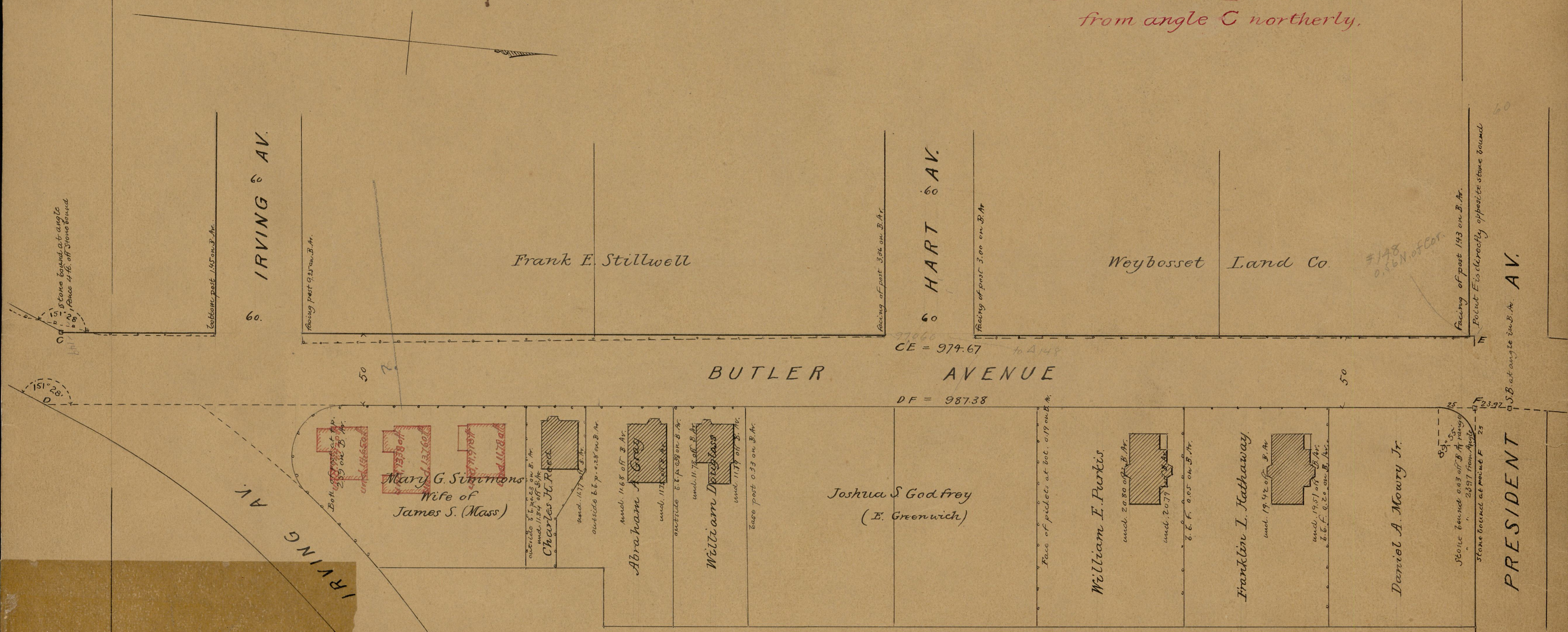
035389

City Engineer's Office
May 22 1877.

MAP OF
BUTLER AVE.
FROM SOUTH ANGELL ST. TO PRESIDENT AV.
IN THREE SHEETS.

Butler Ave. extends from South
Angell St. as established by plat
in Street Plat Book No 4. p 20.
to President Av.

Widened and changed to
Blackstone Boulevard
from angle C northerly.



Scale 60 feet per inch

OFFICE No.	3176
DRAWER	82
SHEET	B-13