

MAP OF

Copy of 08330.

PROVIDENCE, R.I.
CITY ENGINEER'S OFFICE

STREET LINE DEPT.

March 2, 1915

040740

WEBSTER ST.

FROM ASHBURTON ST. TO AMBROSE ST.

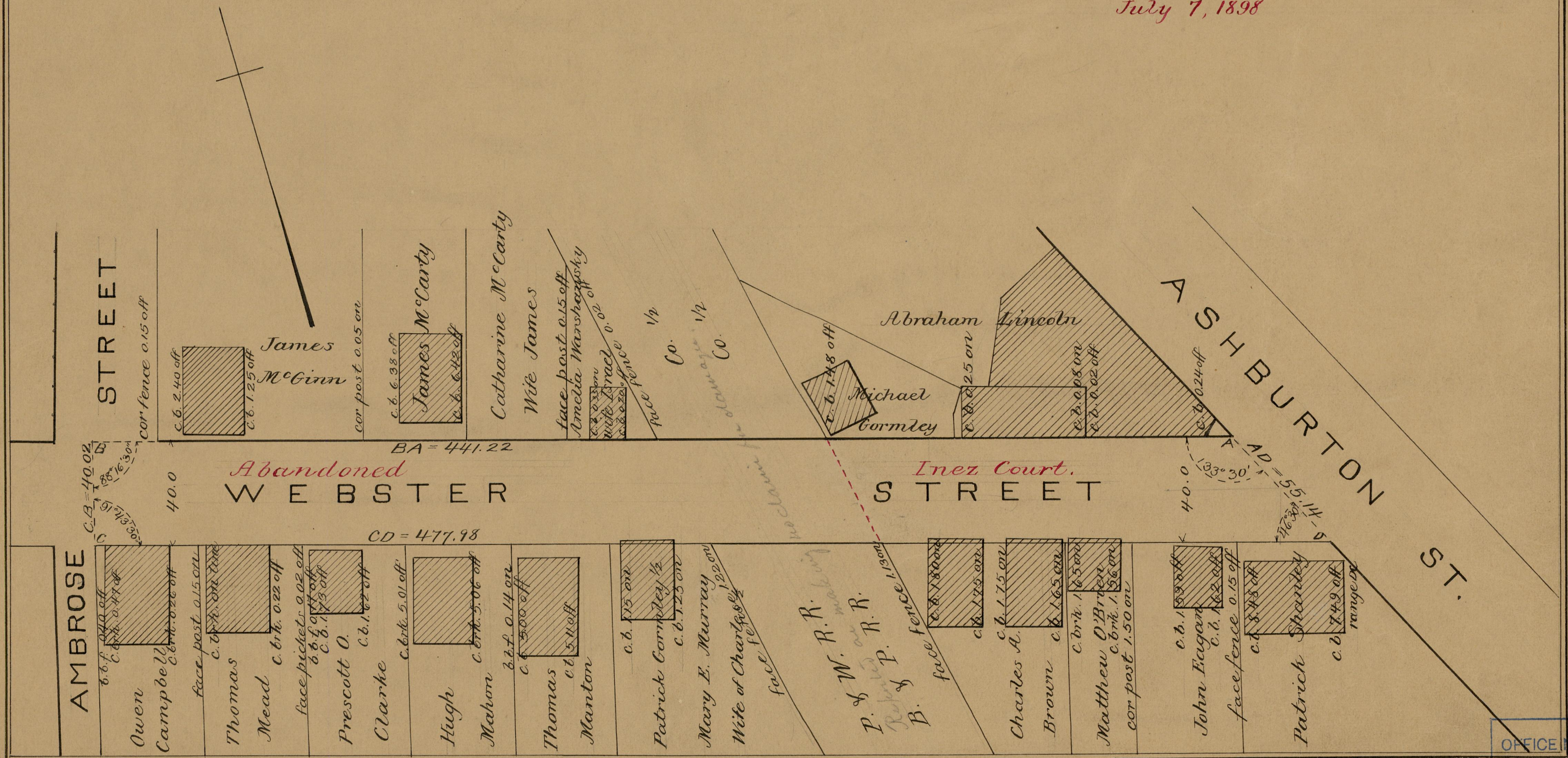
SCALE 40 FEET PER INCH.

Providence R.I.
This map accompanies
our report of this date.

Committee

Portion east of railroad changed to Inez Court.

July 7, 1898



OFFICE No. 6985

DRAWER 82

SHEET R. 124