

Butler Avenue extends from South Angell St as established by plat in Street Plat Book 4 page 20 to President Avenue

MAP OF BUTLER AVE FROM SOUTH ANGELL ST TO PRESIDENT AV IN THREE SHEETS

City Engineer's Office May 22 1877

COMPARED.

William G. Brewer, City Engineer

EXAMINED

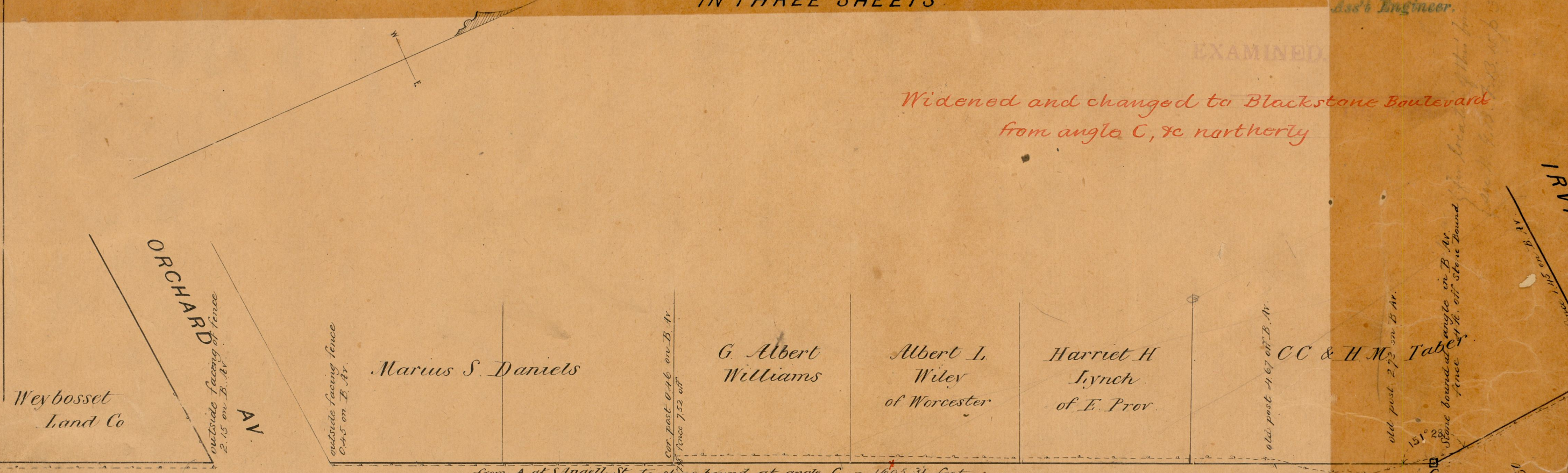
Widened and changed to Blackstone Boulevard from angle C, &c northerly

STREET LINE DEPT.

May 22, 1877

03855

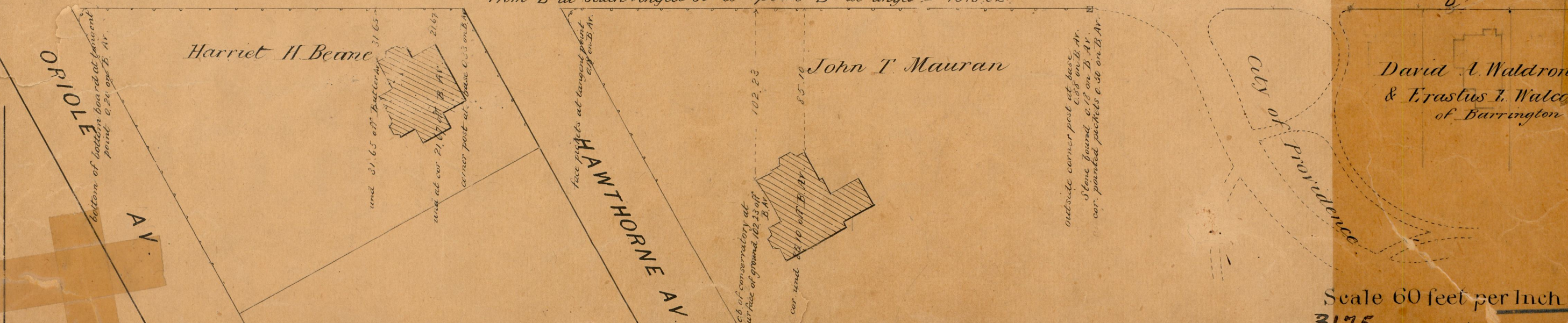
OFFICE No. 2



from A at S Angell St to stone bound at angle C = 1605.31 feet

BUTLER AVENUE

from B at South Angell St to point D at angle = 1618.02



Scale 60 feet per Inch

3175

82

B-12

82 B-12