

# B 3452-3

CITY ENGINEER'S OFFICE.  
STREET LINE DEPT.

June 26, 1882.

07892

MAP OF

# CLINTON STREET

FROM PRAIRIE AVE. TO GAY ST.

SCALE 60 FEET PER INCH.

Providence R.I.  
This map accompanies  
our report of this date.

Committee.

Changed to Willard Avenue, Sept. 16, 1886.

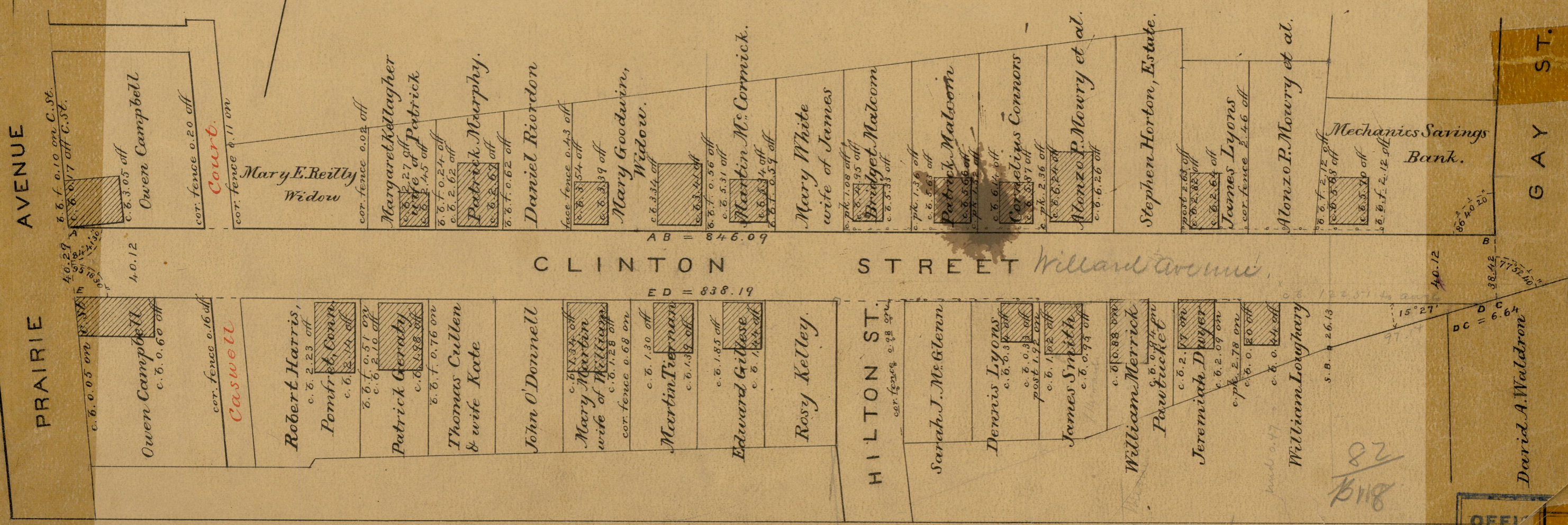
Lines re-run Jan 1897

See Section plan.

Note See map of extension of Clinton St  
from Gay St. to Plain St.

846.09  
838.19  
6.64  
21690.92  
845.46

6849  
82  
B-118



AVENUE

PRAIRIE

CLINTON STREET Willard Avenue

GAY ST.

AB = 846.09

ED = 838.19

40.12

15° 27'

DC = 6.64

838.19  
1.20  
836.99

82  
B-118

0649

82  
B-118

OFFICE No. 6866  
DRAWER 82  
SHEET B-119