

W.B.B. - 115 - 117

OFFICE No. 317
DRAWER " 82
B-1

Butler Av. extends from S. Angell St.
as established by plat in Street Plat Book
No 4 page 20, to President Avenue.

MAP OF BUTLER AVE

FROM SOUTH ANGELL ST TO PRESIDENT AVE
IN THREE SHEETS.

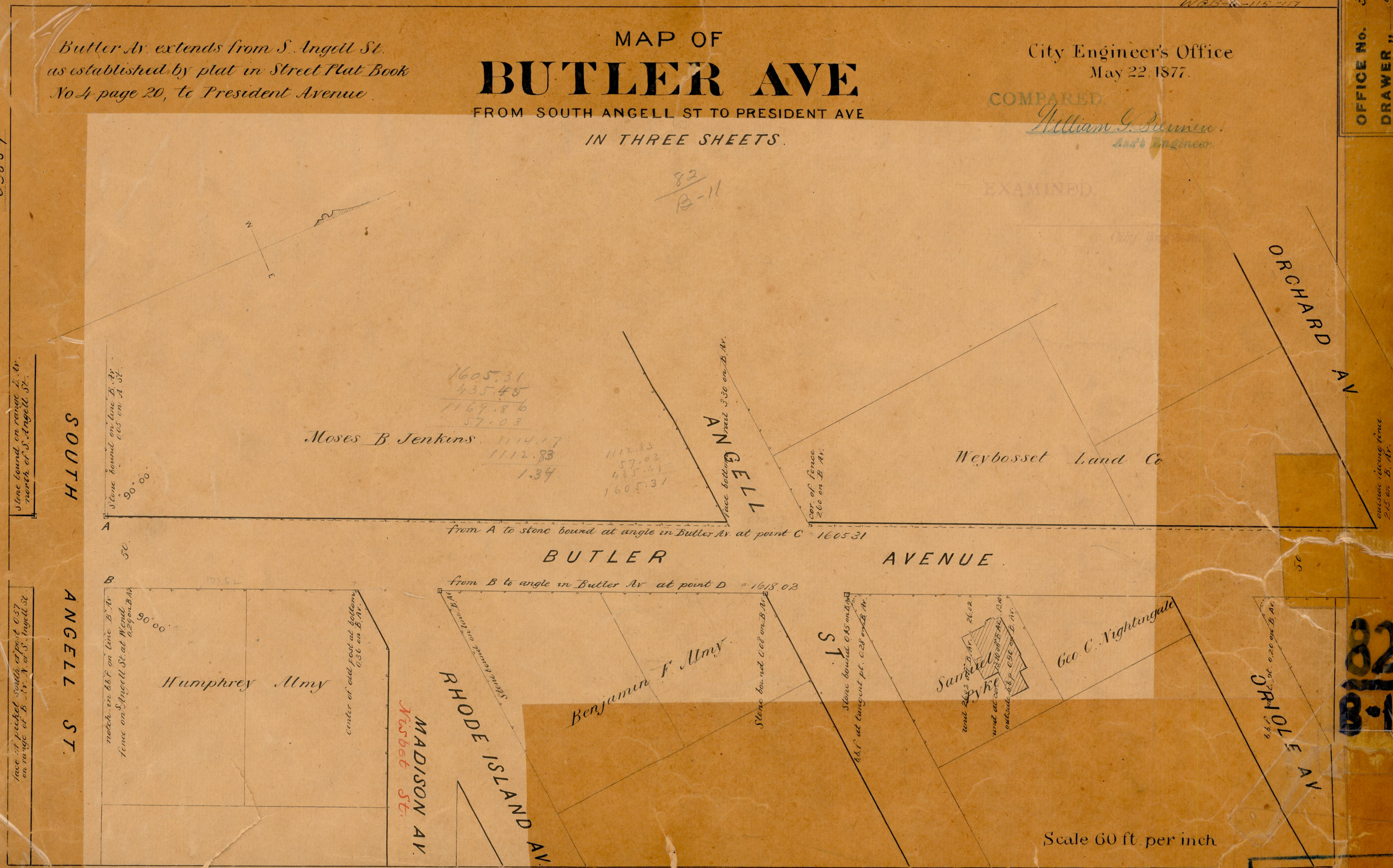
City Engineer's Office
May 22, 1877.

COMPARED
William G. Plummer
Asst Engineer

EXAMINED

CITY ENGINEER'S OFFICE.
STREET LINE DEPT.

May 22, 1877
63854



Stone bound on range L. Av.
north of S. Angell St.

SOUTH

Stone bound on line B. Av.
0.65 on A. St.

90° 00'

Moses B. Jenkins 1114.17
1112.83
1.34

1112.83
57.03
435.48
1605.31

face bottom of
ANGELL
3.30 on B. Av.

cor. of fence
260 on B. Av.

Weybosset Land Co

outside rising fence
2.15 on B. Av.

From A to stone bound at angle in Butler Av. at point C = 1605.31

BUTLER AVENUE

from B to angle in Butler Av. at point D = 1618.02

face of picket south of post 0.37
on range of B. Av. N. of S. Angell St.

ANGELL ST.

match on hht. on line B. Av.
fence on S. Angell St. at West
0.29 on B. Av.

90° 00'

Humphrey Almy

center of old post at bottom
0.36 on B. Av.

MADISON AV.
Mabel St.

RHODE ISLAND AV.

Benjamin F. Almy

Stone bound 0.68 on B. Av.

ST.

Stone bound 0.45 on B. Av.
hht. at tangent pt. 0.28 on B. Av.

Samuel Pyke
and 26.2 on B. Av. 26.02
and at core 23.10 of B. Av. 13.10
outside 8.8 p. 6.94 on B. Av.

Geo. C. Nightingale

ORIOLE AV.

Scale 60 ft. per inch

82
B-11

OFFICE No. 3174
DRAWER " 82
B-11

82
B-11