

Providence R.I.
 This map accompanies our
 report of this date.

MAP OF

IVES STREET

FROM INDIA ST. TO WICKENDEN ST.

SCALE 50 FT. PER INCH.

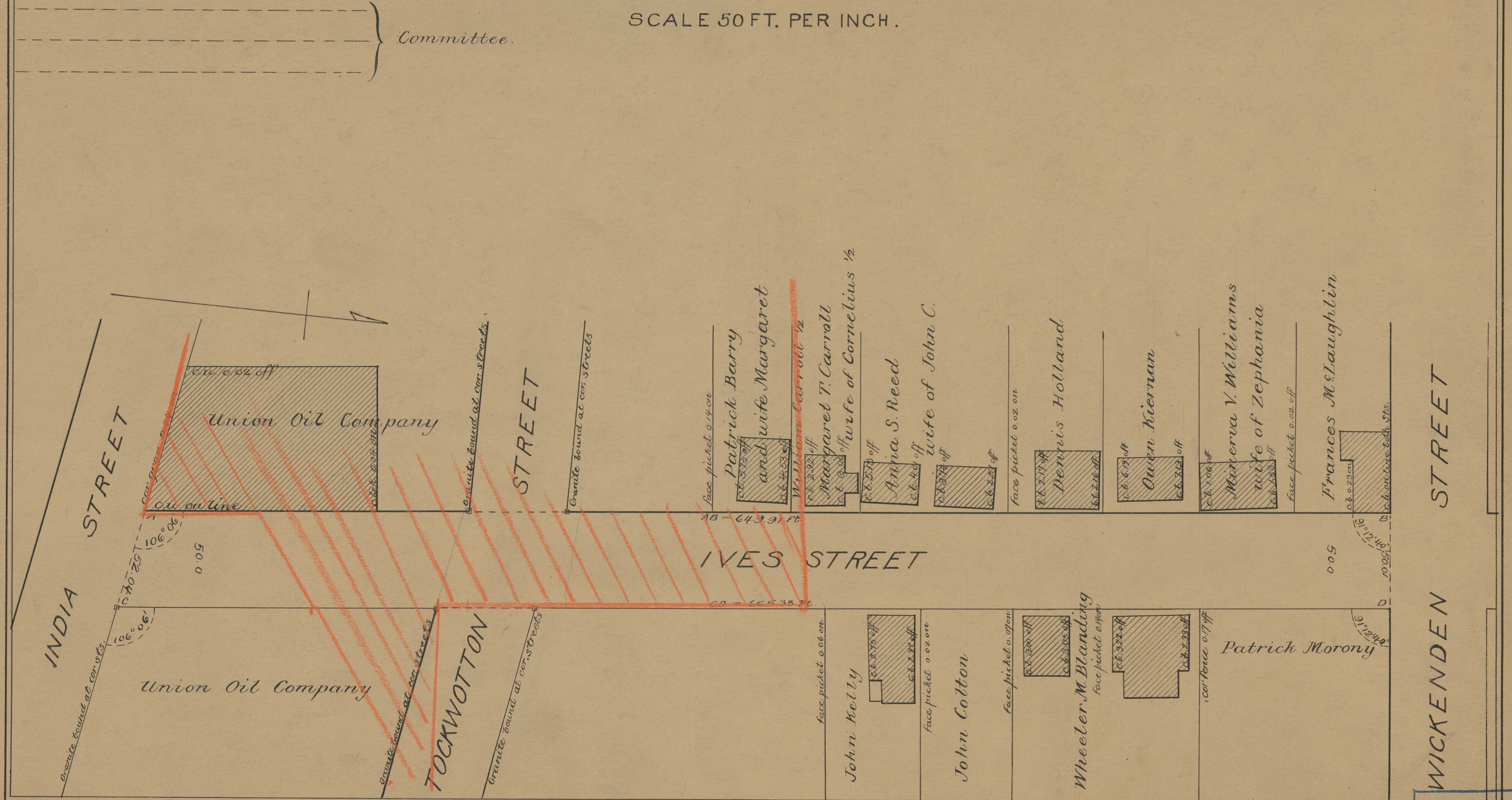
Copy of 06936

PROVIDENCE, R.I.
 CITY ENGINEER'S OFFICE
 STREET LINE DEPT.

March 2, 1915.

040729

Committee.



OFFICE No. 5550
 DRAWER 82
 SHEET B-107