

April 19, 1877
03788

Blackstone st extends from Eddy st as established by the Town Council of the Town of Cranston May 25, 1867 to the Harbor-line.

This map accompanies our report of April 1877

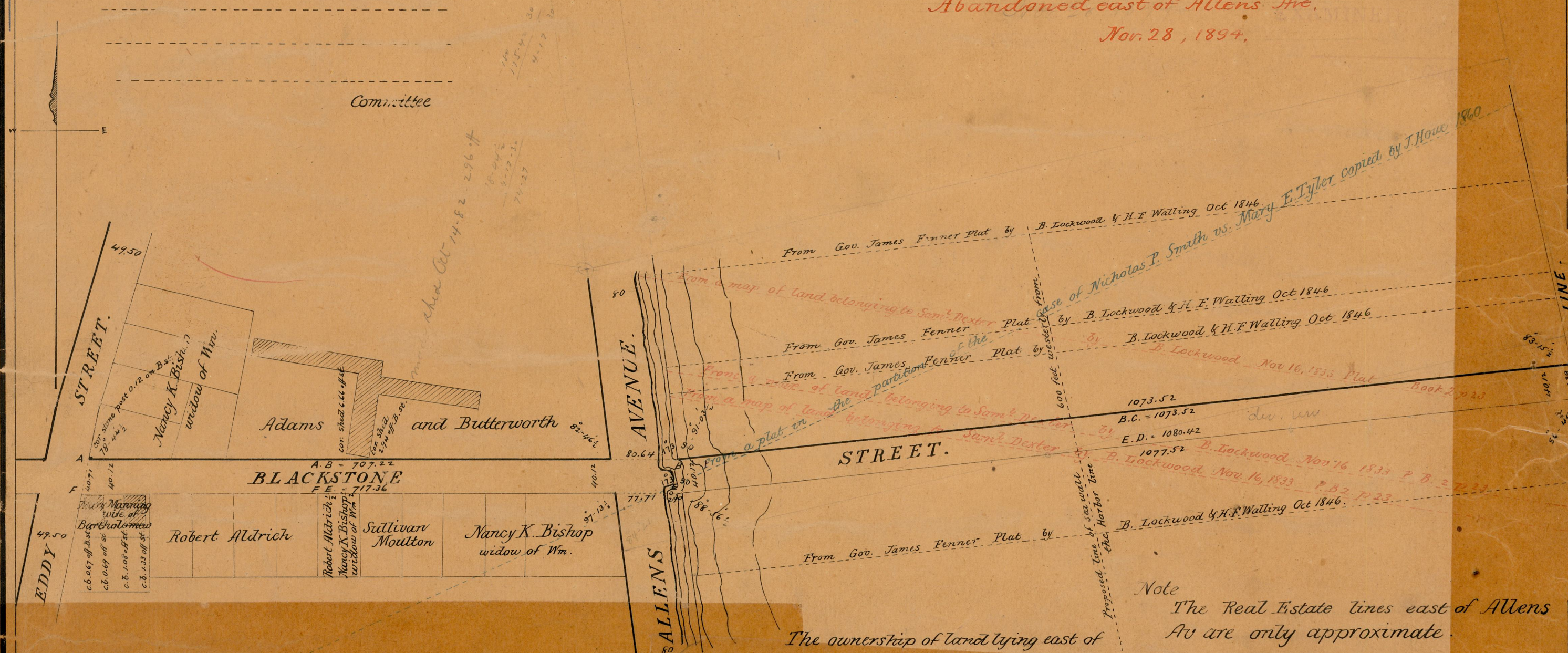
PLAN OF BLACKSTONE ST. From Eddy st. to the Harbor-line.

City Engineer's Office.
April 19, 1877.

COMPARED.

William G. Brewster
Asst Engineer.

Abandoned east of Allens Ave.
Nov. 28, 1894.



Allens avenue 80 ft in width was decided for a public highway to the City by adjoining owners Sept 16, 1875 see D. B. 255 page 377.

Note
The Real Estate lines east of Allens Ave are only approximate.

Scale 120ft per inch

OFFICE No. 3116
DRAWER " 82
SHEET " B-10

82
B-10

OFFICE No. 3116
DRAWER " 82
SHEET " B-10