

Note, The lines shown, ABCDEFGHI agree with deeds recorded in deed books 303, page 209, 365, page 270 366, page 323 and 387, page 458.

PROVIDENCE, R.I.
CITY ENGINEER'S OFFICE
STREET LINE DEPT.
Jan. 24, 1896.

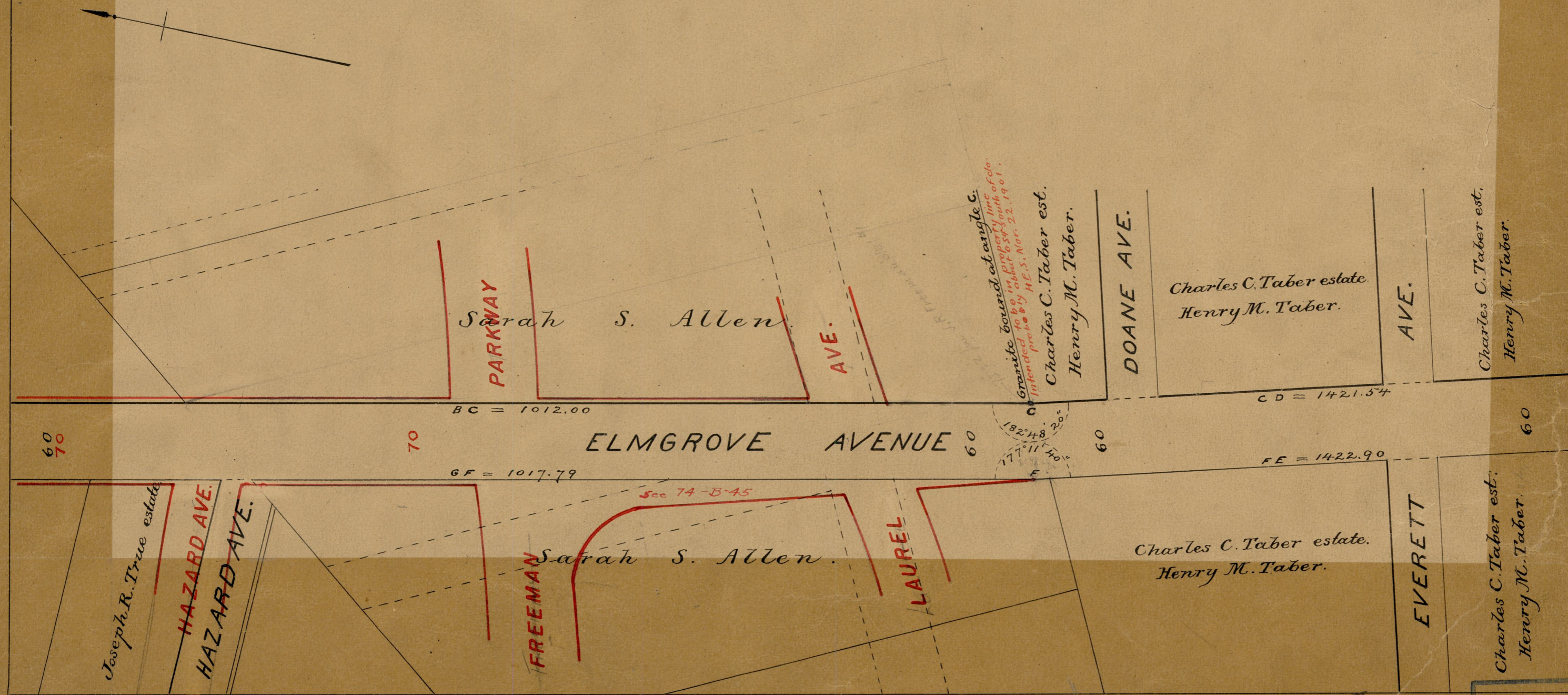
024815

PLAT OF ELMGROVE AVENUE

FROM OLNEY ST. TO THE SOUTHERLY LINE OF IRVING AVE.

IN THREE SHEETS.

SCALE 80 FEET PER INCH.



82
A99

82 - A-99

OFFICE No. 12754
DRAWER 2