

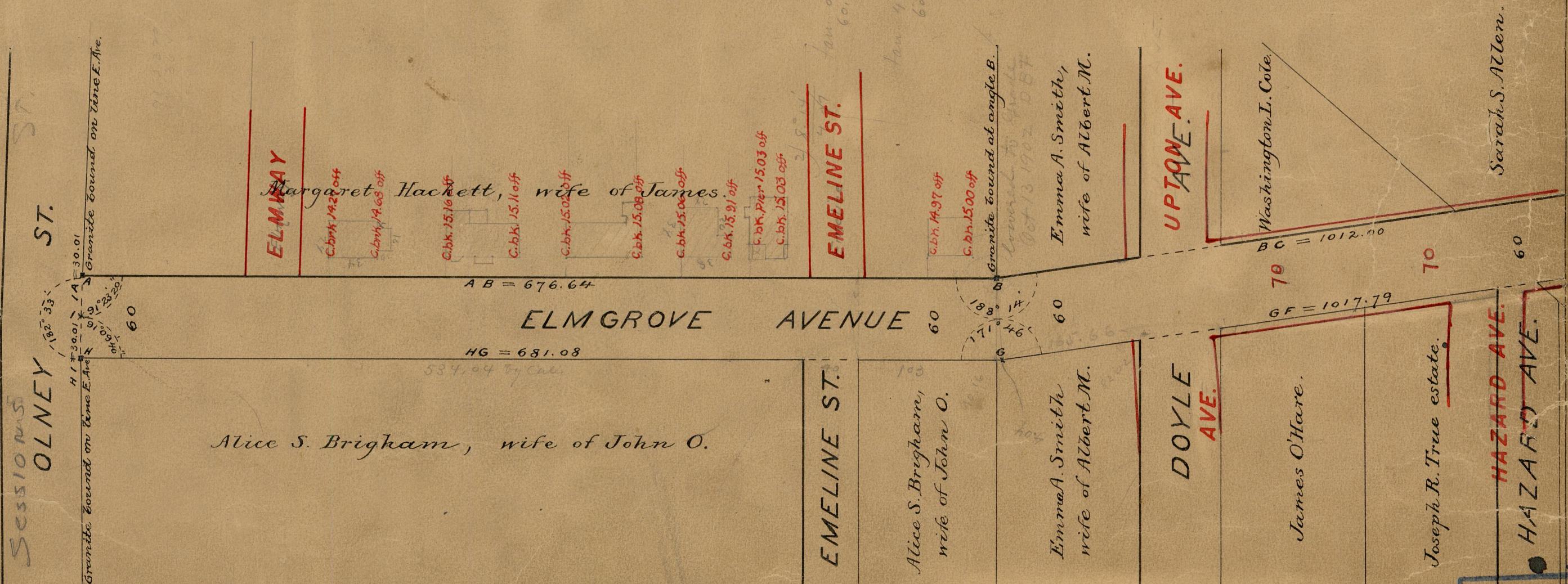
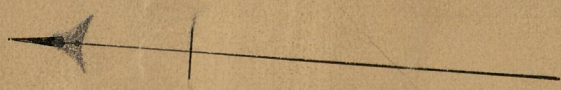
Note, The lines shown, ABCDEFGHI, agree with deeds recorded in deed books 303, page 209; 365, page 270; 366, page 323 and 387 page 458,

PROVIDENCE, R.I.
CITY ENGINEER'S OFFICE
STREET LINE DEPT.
Jan. 24, 1896.
024814

PLAT OF
ELMGROVE AVENUE
FROM OLNEY ST. TO THE SOUTHERLY LINE OF IRVING AVE.
IN THREE SHEETS.

SCALE 80 FEET PER INCH.

676.64
1012.00
1421.54
3110.18
3121.77
3121.77
3110.18
681.08
1017.79
1422.98
3121.77
7.667844
1.778137
-1.446000 = 0.28
7.357771
1.778137
0.625322 = 9.82
0.23
4.04
631.08
4.04
677.04
108.
574.04
40
534.04
488.
104.00



SESSIONS
OLNEY ST.

Granite bound on line E. Ave. 117° 30.01' 1A = 30.01
Granite bound on line E. Ave. 119° 00' 12B = 20.00
OH = 120.00
60

ELMWAY

Margaret Hackett, wife of James
C. bk. 142.03 off
C. bk. 14.63 off
C. bk. 15.16 off
C. bk. 15.11 off
C. bk. 15.02 off
C. bk. 15.08 off
C. bk. 15.06 off
C. bk. 15.91 off
C. bk. 15.03 off
C. bk. 15.03 off

AB = 676.64

ELMGROVE AVENUE

HG = 681.08

Alice S. Brigham, wife of John O.

EMELINE ST.

Alice S. Brigham, wife of John O.

Emma A. Smith, wife of Albert M.

DOYLE AVE.

James O'Hare.

Joseph R. True estate.

HAZARD AVE.

HAZARD AVE.

UPTOWN AVE.

BC = 1012.00

GF = 1017.79

Washington L. Cole.

Sarah S. Allen.

82
A-98

82
A-98

OFFICE No. 12753
DRAWER 12