

HES-XII-44-47 Nov. 1, 1880

06255

Providence R.I.  
This map accompanies our  
report of this date.

# MAP OF DEXTER ST.

FROM CRANSTON ST. TO LONG POND *See note*

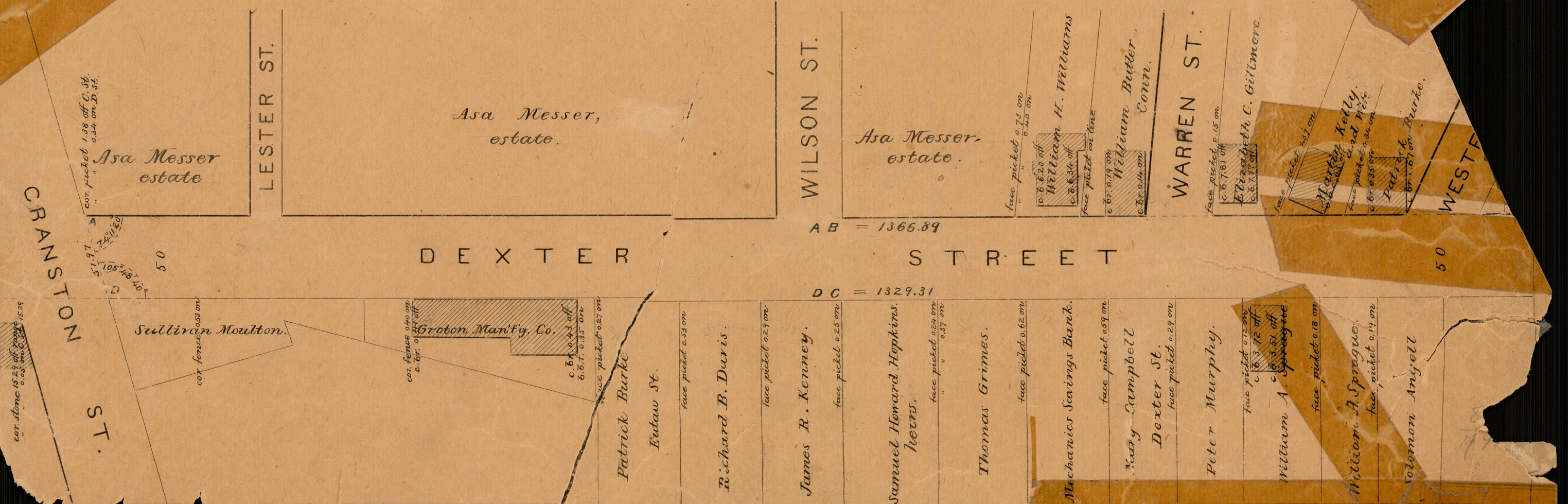
IN TWO SHEETS.

SCALE 60 FT. PER INCH.

Committee.

06255  
82  
A-92

Nov. 8 1882 this map corrected to date.  
The street is to extend from Cranston street  
to the south line of Cromwell street.



CRANSTON ST.

LESTER ST.

WILSON ST.

WARREN ST.

WEST

DEXTER STREET

ST.

Sullivan Moulton.

Groton Man'g. Co.

Patrick Burke

Eutaw St.

Richard B. Davis.

James R. Kenney.

Samuel Howard Hopkins.  
Herts.

Thomas Grimes.

Mechanics Savings Bank.

Nancy Campbell

Dexter St.

Peter Murphy.

William A. Sprague.

William A. Sprague.

Solomon Angell

AB = 1366.89

DC = 1329.31

Asa Messer,  
estate.

Asa Messer,  
estate.

William H. Williams

William Butler  
CONN.

Elizabeth C. Gillmore.

Martin Kelly.

Patrick Burke.

82

82-A92