

August 9, 1915

041130

Dec. 12, 1882 Correct to date

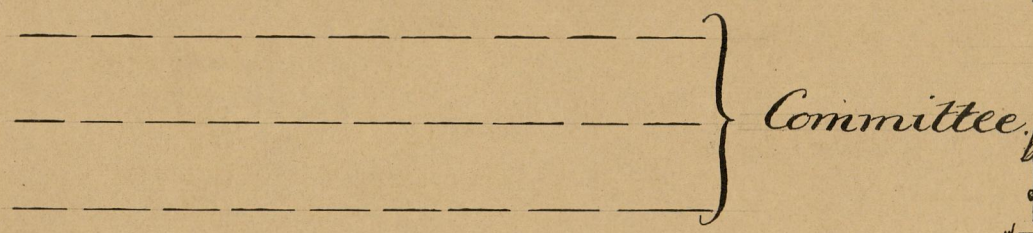
Providence R.I.

This Map accompanies our
Report of this date.

MAP OF GEORGE STREET

FROM BENEFIT ST. TO GANO STREET
IN 8 SHEETS.

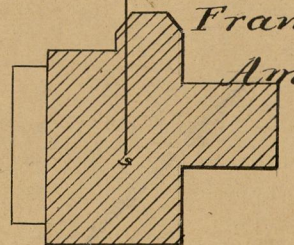
Scale 40 feet per inch.



Amos D. Smith
Estate

ST.

Edward A. Greene & wife, one fourth
Henry J. Smith, one fourth
Francis M. Smith, one fourth
Amos D. Smith Jr. one fourth



Andrew Robeson Jr.
of Newport, Trustee to
Eliza H. Allen
wife of Z. Allen, estate

Hope B. Russell
three quarters
Ann A. Ives
one quarter

Nail in stake 0.07 off George St.
face fence on line George St.
Nail in stake 0.06 on Governor St.

ST. 50.0

40.12

LM = 928.87

GEORGE STREET

40.12

Samuel M. Noyes

COOME

Helen P. Braystone
wife of Henry B.

Sarah F. B. wife of
Charles Morris
Smith

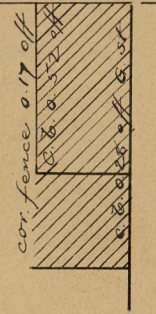
Anne Brown Frances
Woods wife of
Marshall

Marshall Woods
& Wife

William Manser
Estate

Isaac N. Hallett

GOVERNOR



cor. post 0.31 on G. St.

face fence 0.33 on

face fence 0.28 on

face post 0.12 on

6.6 f. 0.17 on

6.6 f. on line George
cor. post 0.15 on Governor

KN = 874.71

OFFICE No. 5220
DRAWER " 82
SHEET " A-84