

05698

0569

Prov. R.I.

This map accompanies
our report of this date

} Committee

MAP OF

POWDERMILL STREET

from West River St to southerly line, as occupied,
of land of George H Cortliss.

SCALE 40 FEET TO AN INCH

Oct. 8, 1880

COMPARED.

Fredrick Bladding
Asst Engineer.

EXAMINED

City Engineer.

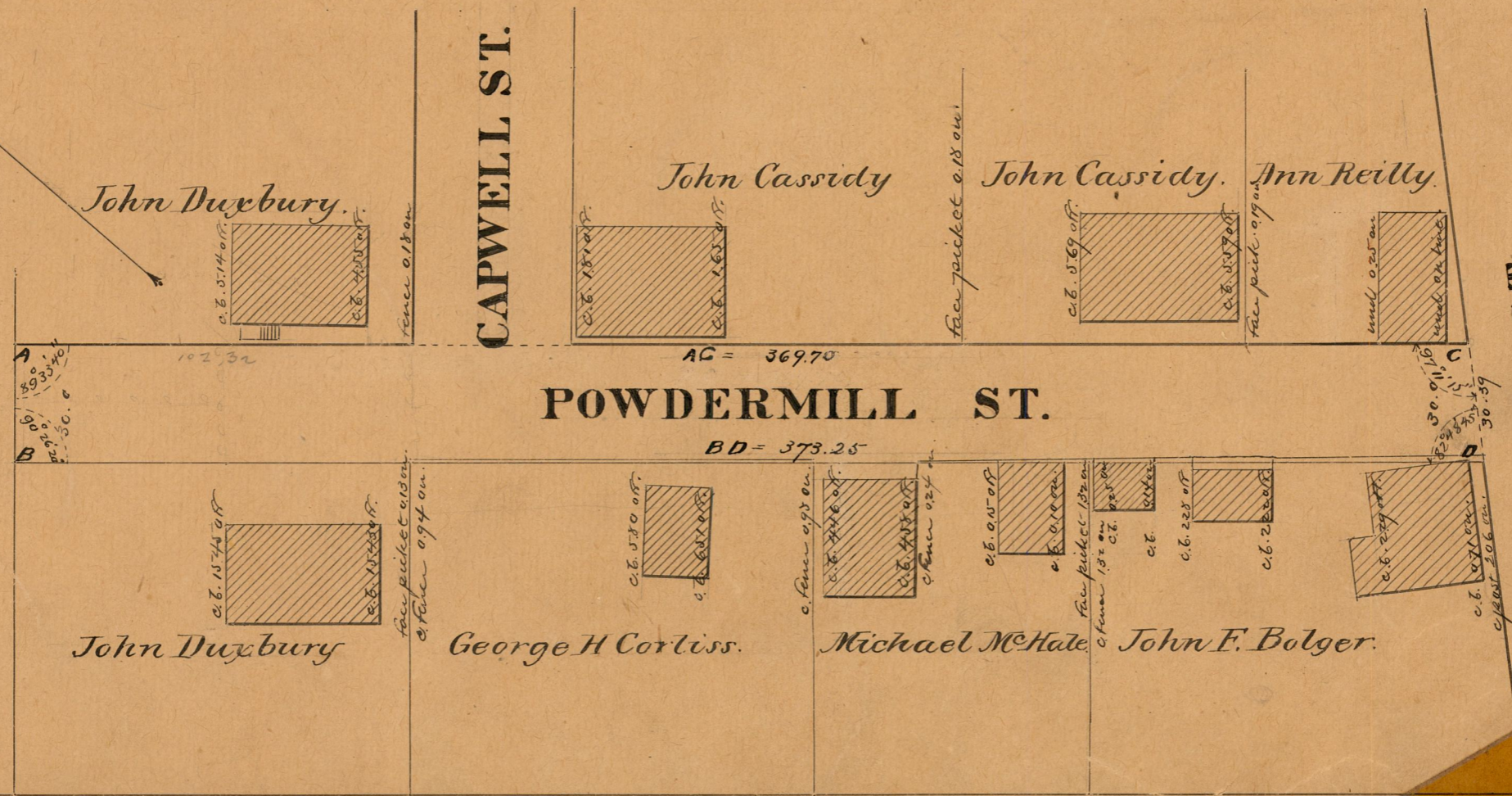
369.70
373.25
742.95
371.47

82
A75



True Meridian.

George H. Cortliss.



CAPWELL ST.

POWDERMILL ST.

WEST RIVER ST.

82
A75