

Sept. 15, 1895
05669

Providence R.I.
This map accompanies our report
of this date

MAP OF BENEVOLENT ST.

City Engineer's Office

FROM BENEFIT ST. TO GOVERNOR ST.

Scale 40 ft. per inch.

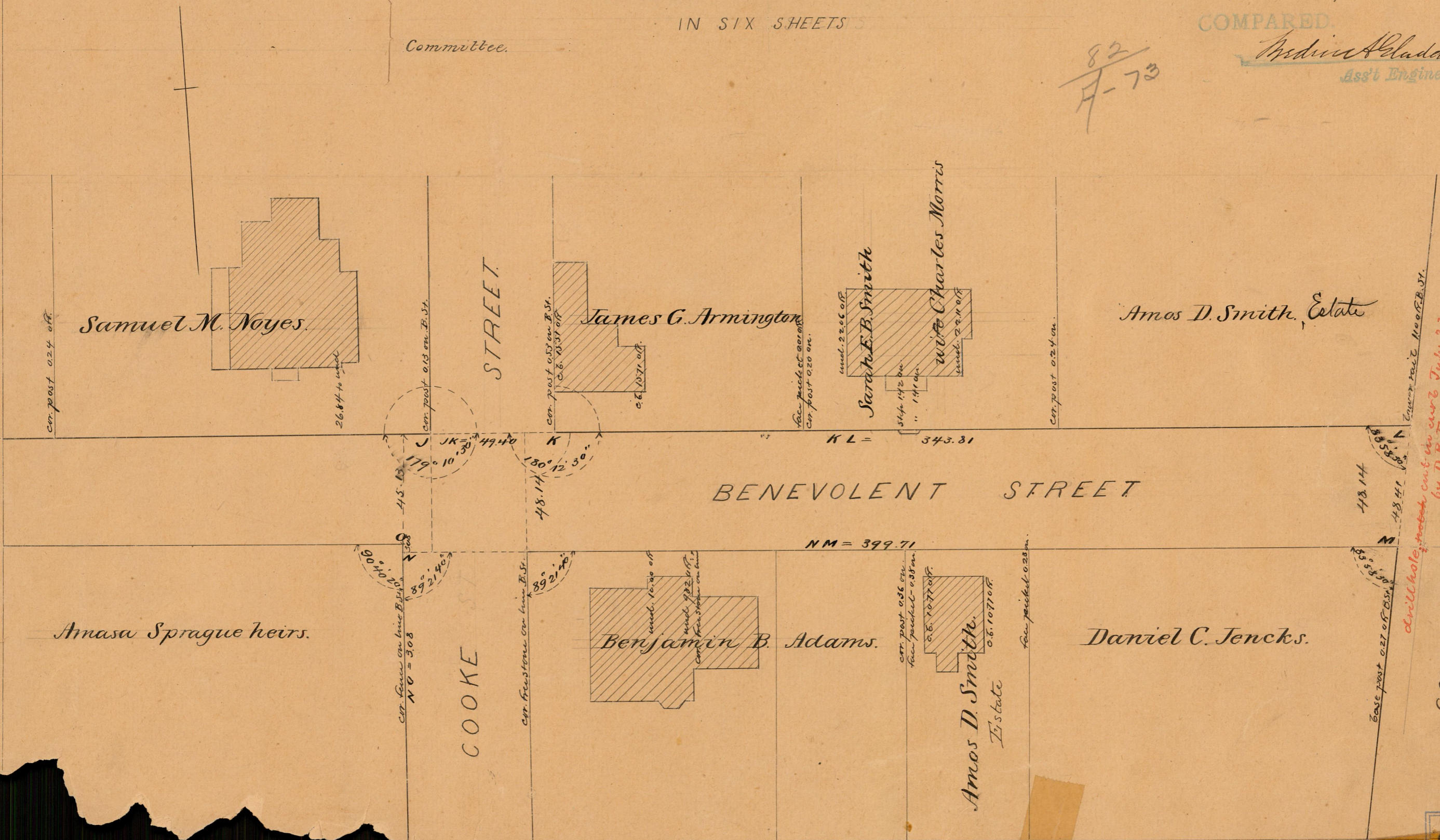
IN SIX SHEETS

COMPARED

Archie A. Blodding
Ass't Engineer

82
A-73

Committee.



*cut in curv July 23, 1895
by D.B.T. after running out notes of
original line*

OFFICE No. 4
DRAWER 82
SHEET A-73

82
A-73