

CITY ENGINEER'S  
STREET LINE DEPT.  
Feb. 6, 1879  
04861

# MAP OF CHAPIN AVE.

City Engineer's Office.  
Feb. 6, 1879

Providence R.I.  
This map accompanies our report  
of this date

FROM MESSER ST. TO PARADE ST.

Scale 80 ft per inch

Committee.

COMPARED  
Fredric Bladding  
EXAMINED.

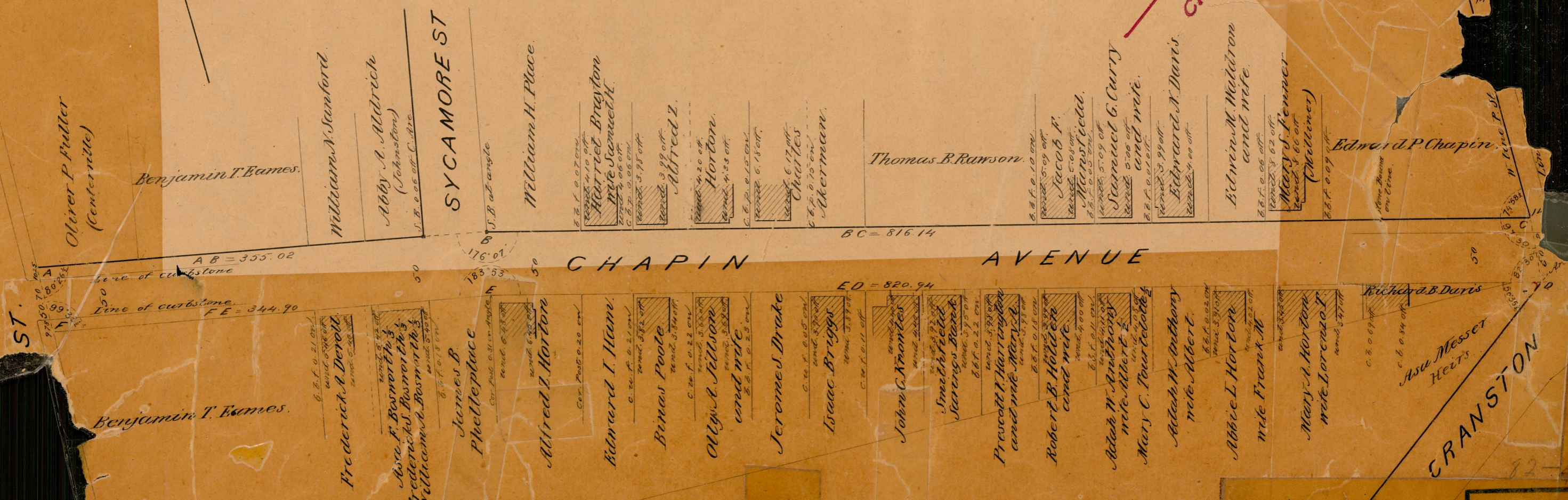
04861  
52  
A-7

355.02  
816.14  
1171.16  
1165.84  
2337.00  
1168.50

CHAPIN AVE.

NOTE: The area indicated  
by the letters ABC was de-  
clared a public highway by  
Resolution of the Board of  
Aldermen Oct. 6, 1927.

A Tang = 5.67  
arc AB = 89.2  
B Tang = 5.67  
CRANSTON ST.



OFFICE No. 14  
DRAWER

82 - A-7