

Providence R.I.  
This map accompanies  
our report of this date.

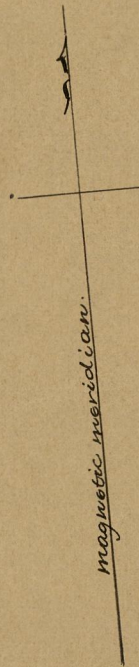
Committee

# MAP OF HENDRICK ST.

FROM ACADEMY AVE. TO MT. PLEASANT AVE.  
IN TWO SHEETS.

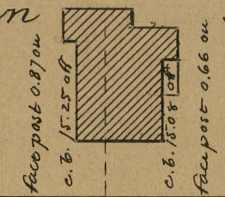
City Engineer's Office

Scale 50 feet per inch.



50.0

John Anderson



face post 0.87 on  
c. b. 15.25 off  
c. b. 11.08 on  
face post 0.66 on

William H. Potter

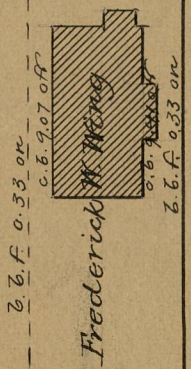
Michael Sullivan

PEMBERTON ST.

BA = 775.74

## HENDRICK ST

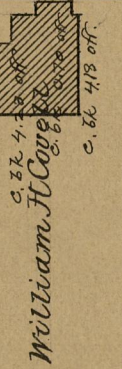
R. S. Rouse & Co.



c. b. 4.33 on  
c. b. 9.07 off  
c. b. 11.08 on  
c. b. 9.33 on

PEMBERTON ST.

GH = 775.71

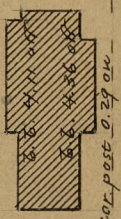


c. b. 4.33 on  
c. b. 9.07 off  
c. b. 11.08 on  
c. b. 9.33 on

William H. Covey  
Catherine McWilliams  
Wife of Owen

Reuben S. Rouse

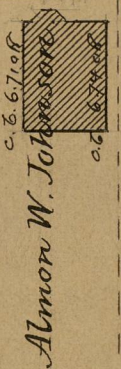
George B. Evans



c. b. 4.33 on  
c. b. 9.07 off  
c. b. 11.08 on  
c. b. 9.33 on

Joseph Smid

William H. Covey



c. b. 6.71 on  
c. b. 11.08 on  
c. b. 11.08 on  
c. b. 6.71 on

Almon W. Johnson  
Patrick Gartland

ACADEMY AVE.

OFFICE No. 4501  
DRAWER " 82  
SHEET " A-56

82  
A-56