

Dec. 31, 1879
05173

Prof. R.I.

This map accompanies our report of this date

Committee

MAP OF

EARLE'S LANE

FROM NORTH MAIN TO CAMP STREET.

City Engineer's Office.

Dec. 31, 1879

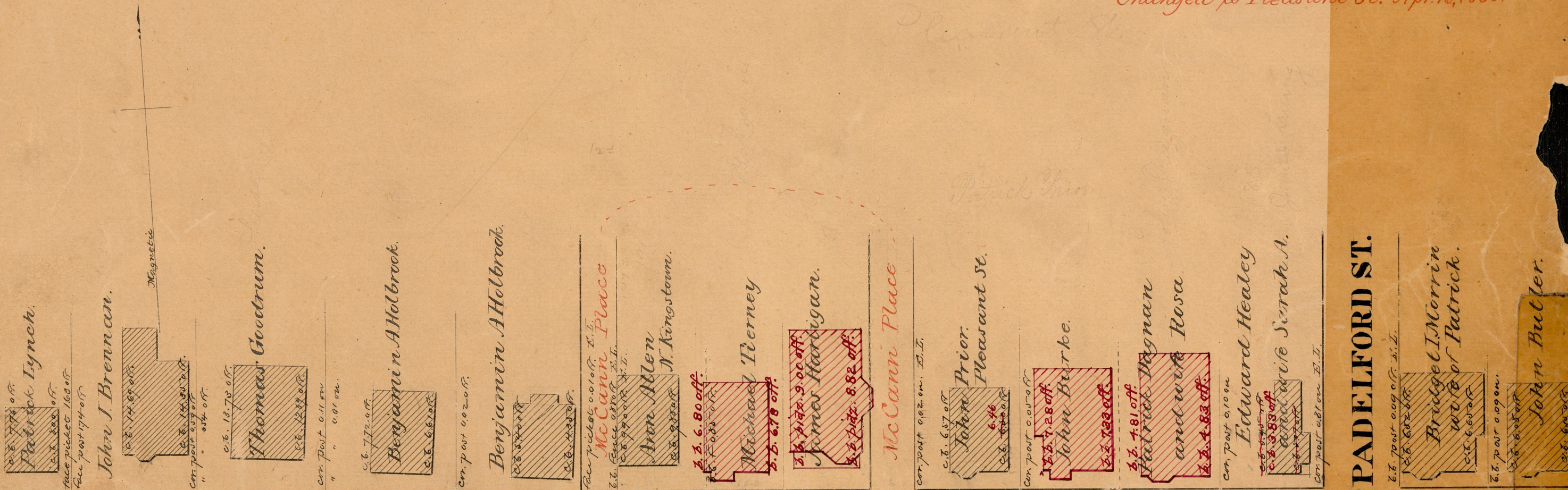
Scale 40 feet to an inch.
COMPARED.

Fredrick Blodding
Ass't Engineer.

Changed to Pleasant St. Apr. 16, 1885.

05173
82
A-44

Changed to Pleasant St.



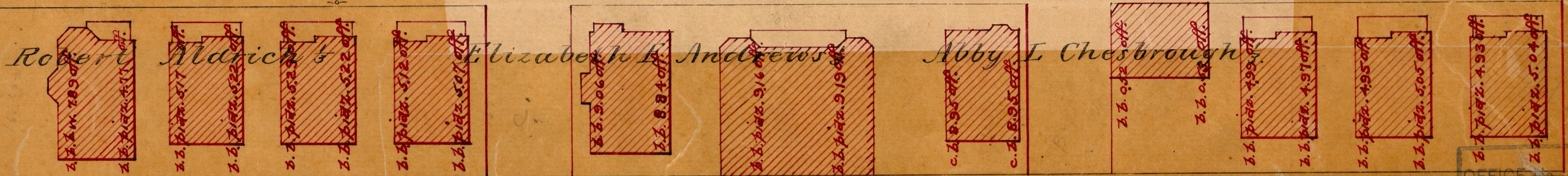
AB = 1313.04

EARLE'S LANE.

ED = 1318.31

40.0

82
A-44



82
A-44

OFFICE
DRAWER
SHEET