

Dec. 31, 1877  
05172

Prov. R.I.

This map accompanies our  
report of this date

} Committee

# MAP OF EARLE'S LANE

FROM NORTH MAIN TO CAMP STREET.

IN THREE SHEETS.

City Engineer's Office,

Dec. 31, 1879

Scale 40 feet to an inch.  
COMPARED.

*Frederic Shadd*  
Ass't Engineer.

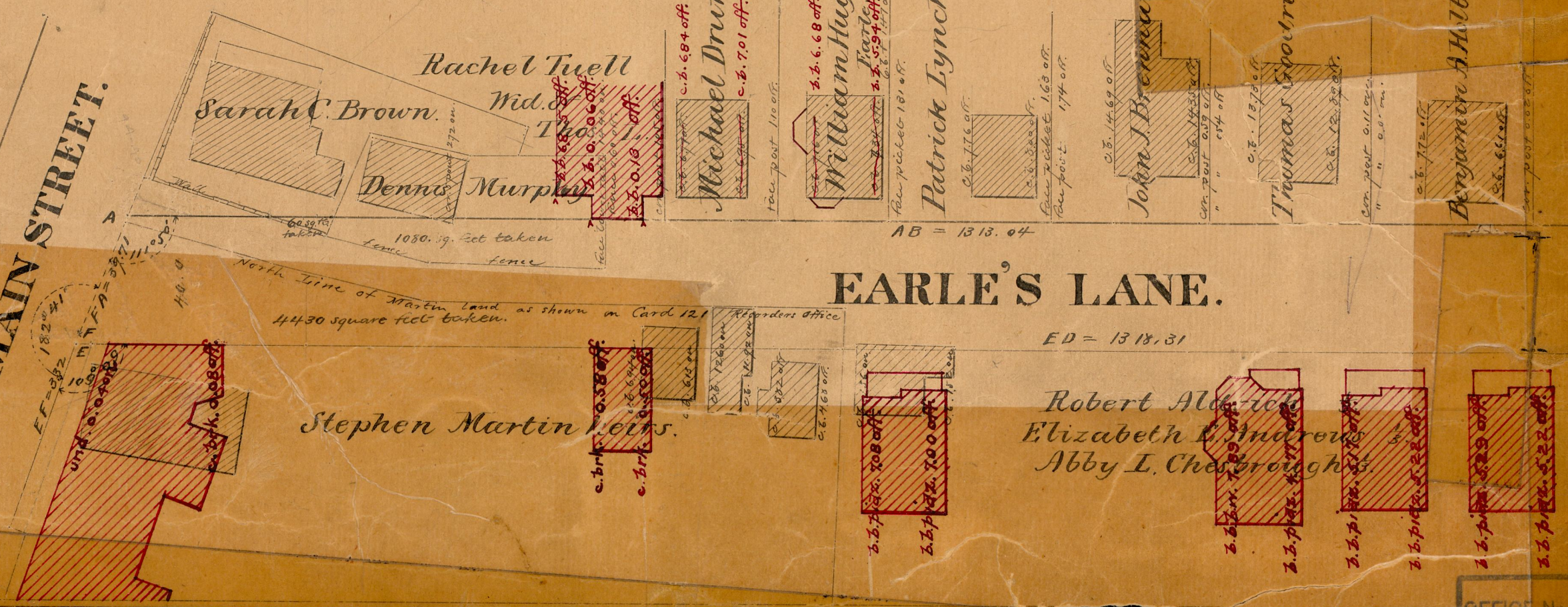
Changed to Pleasant St. Apr. 16, 1885.

05172  
82-443

1313.04  
1315.71  
22631.35  
1375.67

Changed to  
Pleasant St.

NORTH MAIN STREET.



OFFICE NO. 4  
DRAWER 11

82  
A-43

4327  
82 A 43

OFFICE No. 4327  
DRAWER 82

82  
A-43