

Providence R. I.

This map accompanies our report of this date

MAP OF WASHINGTON ST.

FROM COVE ST. TO DEAN ST.

IN FIVE SHEETS

City Engineer's Office
Jan. 18, 1879

Scale 40 ft. per inch.

Committee

Rejected by B. of A. May 15 1879

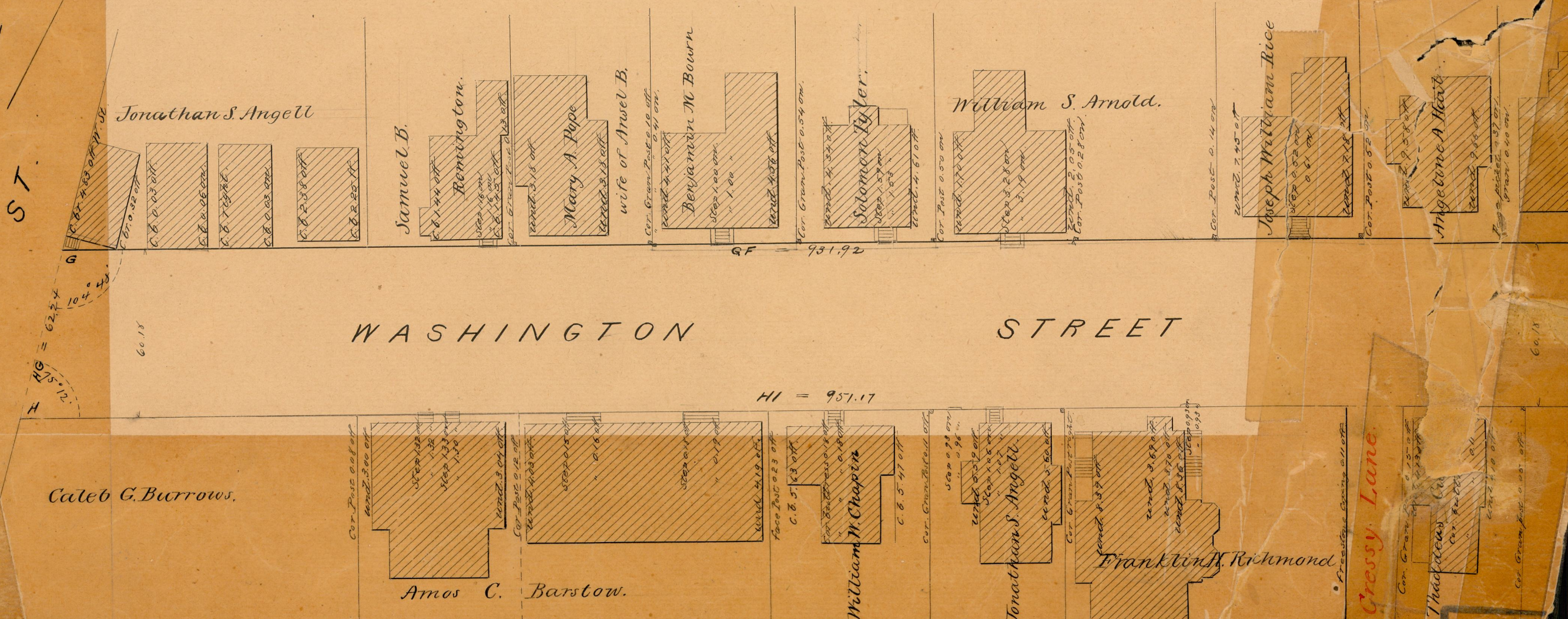
EXAMINED.

Fredrick Blodding
Ass't

City Engineer.

82
A-33

OFFICE No. 400
DRAWER 87
SHEET A



DEAN ST.

ST.

HG = 62.74
104° 48'

60.18

WASHINGTON STREET

GF = 931.92

HI = 957.17

Caleb G. Burrows.

Amos C. Barstow.

William W. Chapin

Jonathan S. Angell

Franklin Richmond

Cressy Lane.

Thaddeus

82-A-33

OFFICE No.
DRAWER