

Jan. 18, 1879
04837

Providence R.I.
This map accompanies our report
of this date.

MAP OF WASHINGTON ST.

City Engineer's Office
Jan. 18, 1879

FROM COVE ST. TO DEAN ST.

Scale 40 ft. per inch.

IN FIVE SHEETS

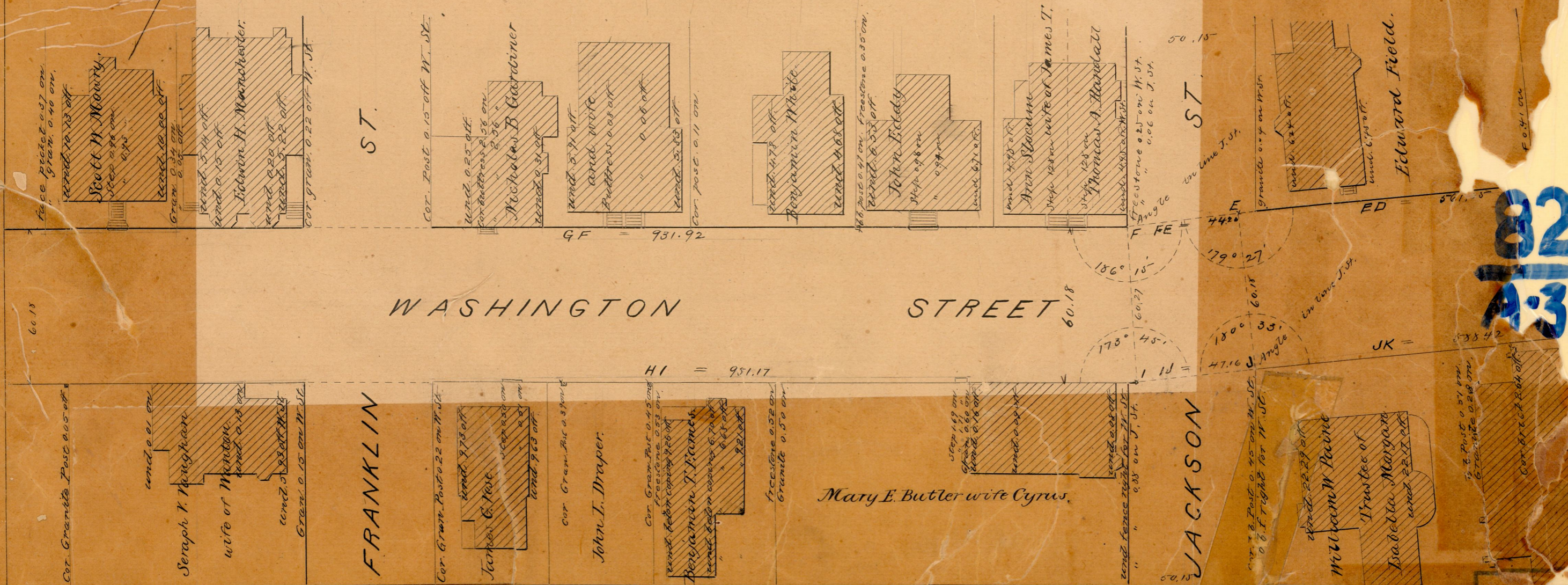
COMPARED

Fredrick Blodding
Asst. Engineer

Committee.

Rejected by B. of A. May 15, 1879

04837
82
A32



82
A32

82
A32

OFFICE
DR