

Oct. 31, 1879  
05115

Providence R.I.  
This map accompanies our  
report at this date.

# MAP OF WASHINGTON ST.

FROM COVE ST. TO DEAN ST

IN FIVE SHEETS

See Sheet #3

City Engineer's Office  
Jan. 18<sup>th</sup> 1879

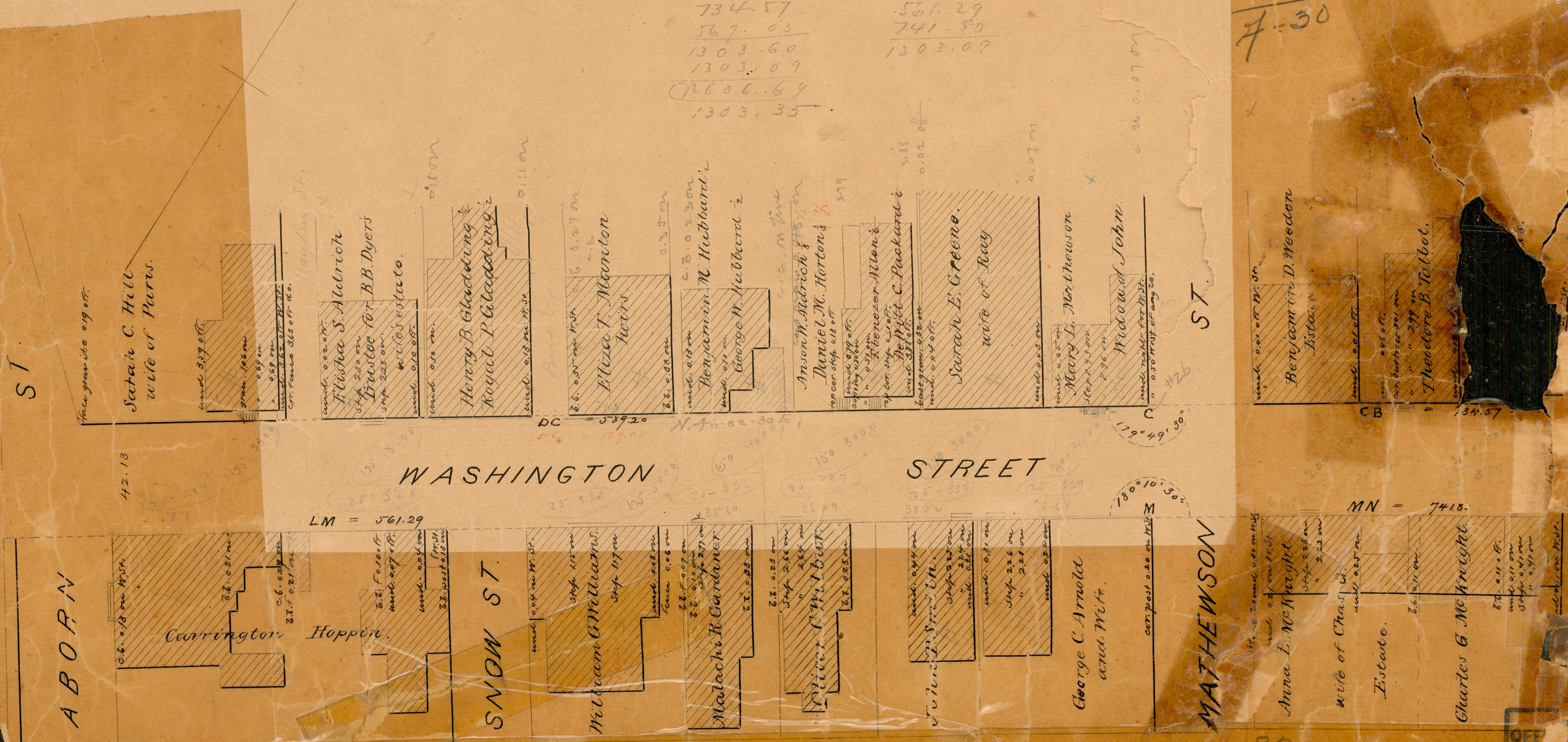
Scale 40 ft per inch.

*Fredric Gladding*  
Asst. Engineer

82  
7-30

734.57  
567.03  
1303.60  
1303.07  
12606.64  
1303.35

561.29  
741.80  
1303.09



ST.

ST.

WASHINGTON STREET

ABORN

SNOW ST.

MATHEWSON

CLEMENCE  
82  
7-30

OFFICE NO. 42  
DRAWING 87

OFF  
DRAW  
4273  
82