

Nov. 1878
04662

SHEET No. 1

F13 B-JII-2

MAP OF BRIDGHAM ST.

Providence R.I.
This map accompanies our
report of this date.

City Engineer's Office
Nov. 1878.

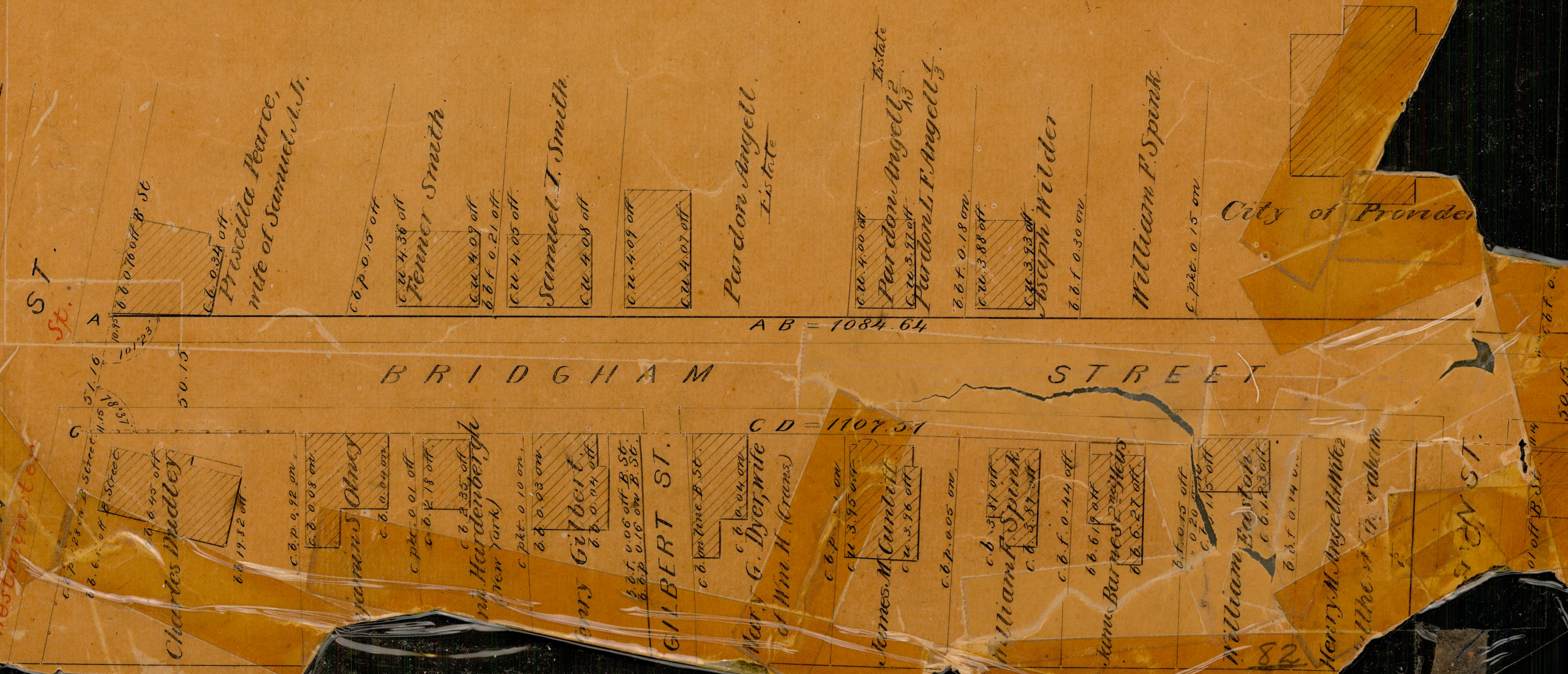
FROM HIGH ST. TO CRANSTON ST.
IN TWO SHEETS

Scale 50 ft. per inch

COMPARED.
Fredric Gladding
EXAMINED.
City Engineer.

04663
82
A-3

Committee



HIGH ST.

ST.

BRIDGHAM

STREET

GILBERT ST.

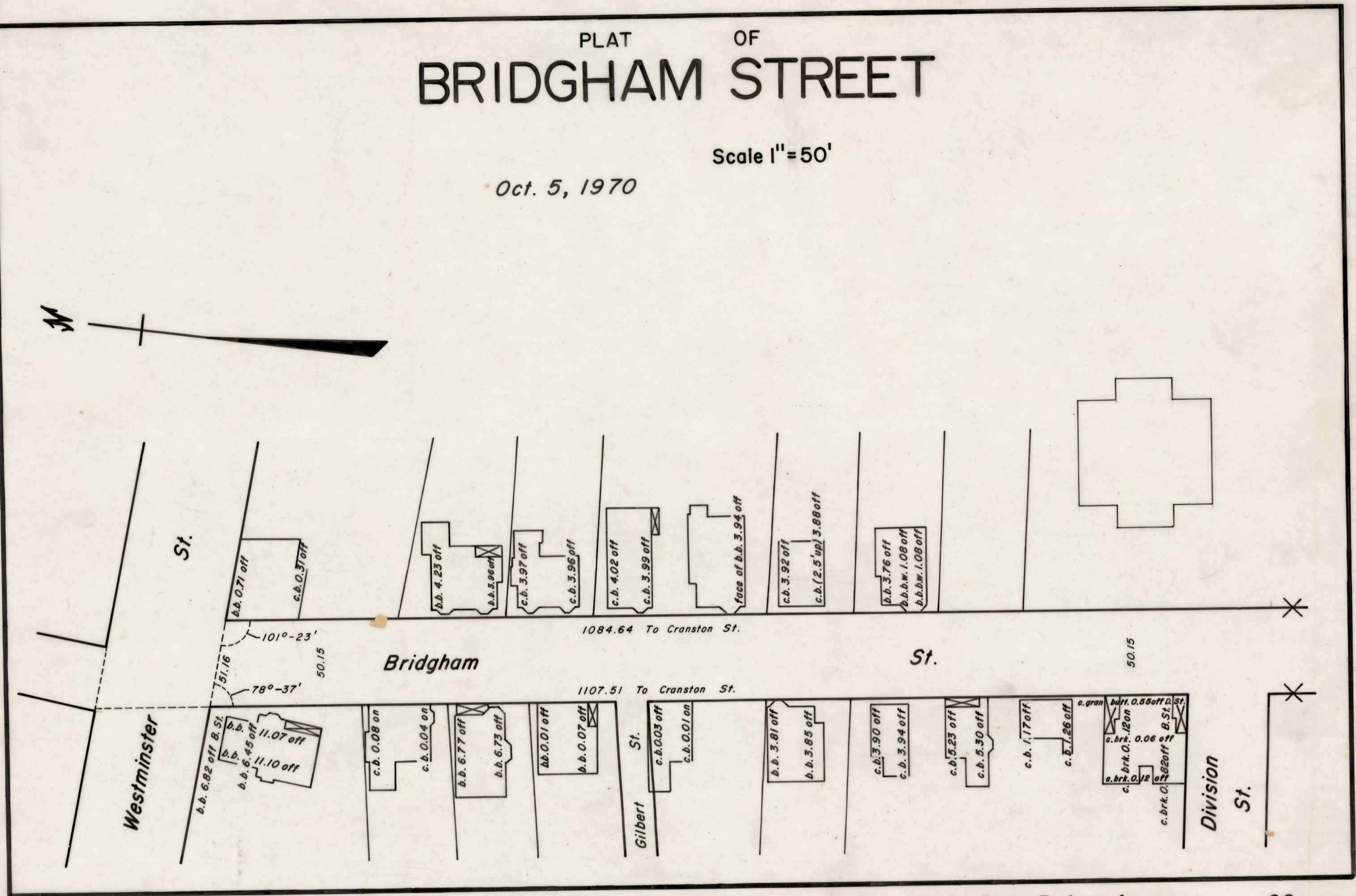
CRANSTON ST.

City of Providence

PLAT OF BRIDGHAM STREET

Scale 1" = 50'

Oct. 5, 1970



Copied From Section Plans $\frac{51}{19}$ & $\frac{51}{18}$ | Most Distances & Angles Taken From Prov. Redev. Ag. Plan No. 1

$\frac{82}{A-3}$