

PROVIDENCE, R.I.
CITY ENGINEER'S OFFICE
STREET LINE DEPT.

Sept. 6, 1895

024404

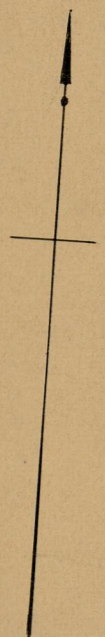
Note The lines indicated by the letters A, B, C & D correspond with deeds recorded in Deed Book 396 pages 391 and 390.

PLAT OF EUCLID AVENUE

FROM THAYER ST. TO BROOK ST.

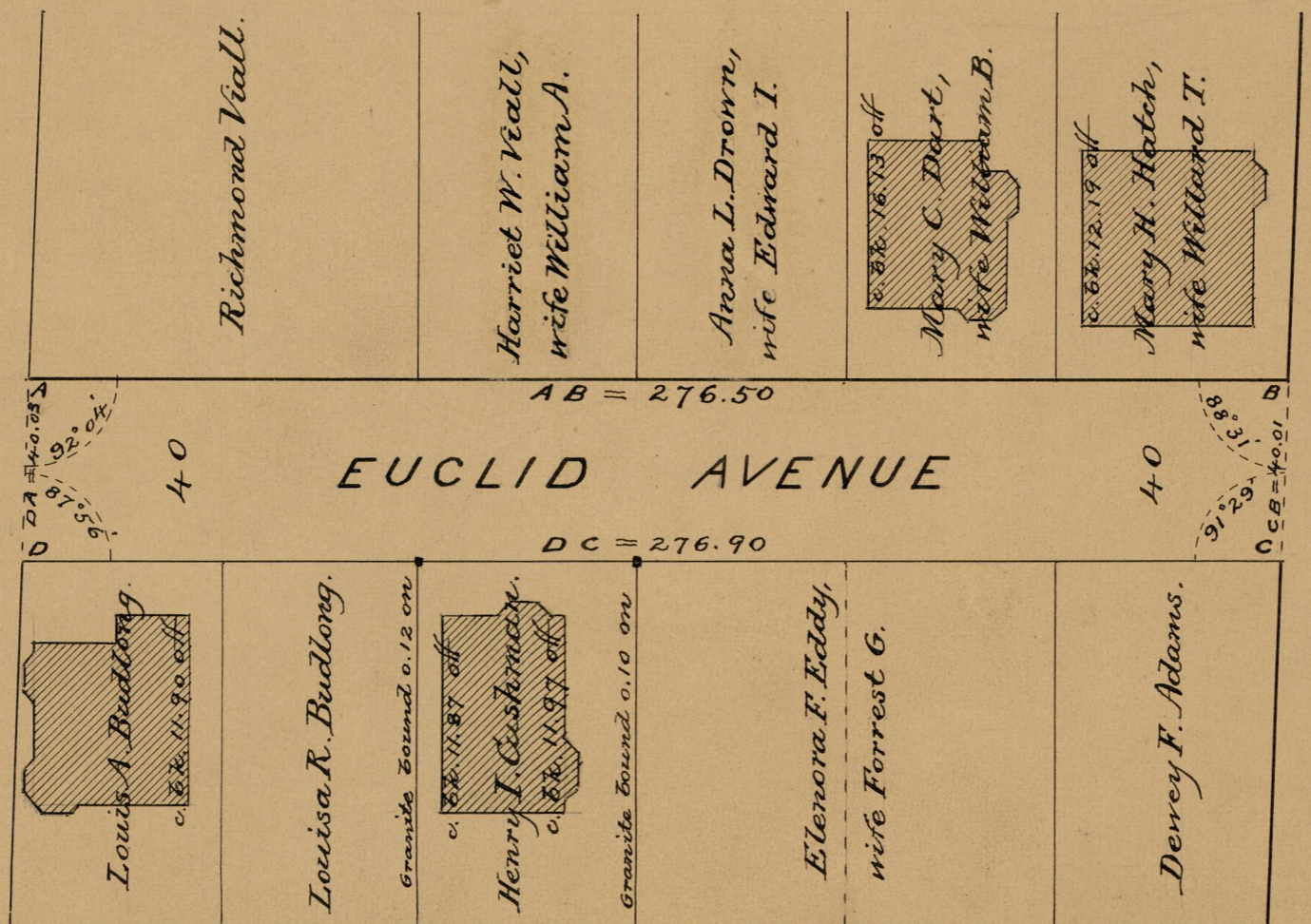
SCALE 40 FEET PER INCH,
DECLARED A PUBLIC HIGHWAY
BY THE
BOARD OF ALDERMEN,
July 9, 1895.

276.70



THAYER ST.

BROOK ST.



OFFICE No.	12670
DRAWER	82
SHEET	A-25